



## 2991 The Lakes Way, Tarbuck Bay FOR SALE



### Nestled Within the Heart of Nature's Embrace

Privately immersed amongst 25 acres of Tarbuck Bay's best land, this modern home is your ultimate getaway. Perched majestically on the edge of Smiths Lake the elevated position boasts panoramic views, with spectacular sunrises and sunsets that seamlessly intertwine the captivating beauty of the bushland and the tranquil allure of the shimmering waters.

This sustainable home has a deep appreciation for the land, utilising the trees that once graced the property to create a home that seamlessly blends with its surroundings. The architecture seamlessly blends traditional charm with modern elegance, featuring a combination of stone and timber elements that exude timeless sophistication.

High ceilings with strategically positioned windows frame the breathtaking views from every room bringing the outside in, and creating an inviting and airy ambience. The open floor plan seamlessly connects the family, living, dining, and kitchen areas, opening to expansive verandas allowing residents to appreciate the 360° views of the surrounding, providing a space for both intimate gatherings and grand entertaining. A fireplace in the living room adds warmth and a touch of coziness, creating a perfect atmosphere for cool evenings. The bathrooms are adorned with high-end fixtures and finishes, complementing the heated floors with a sense of refined comfort.

#### Property Features:

- Spacious living and family room
- Gourmet gas kitchen with butler's pantry
- Three-bedrooms with built-in wardrobes,
- Three bathrooms, two ensuites, main ensuite includes a free-standing bathtub
- Wrap-around veranda
- Air-conditioning throughout the home
- Protected north-east aspect
- Two new water tanks
- Solar hot water with gas booster
- School bus at the front gate

It is exceptionally located, only 6km to Smith Lake, 9 km to Pacific Palms, Blueys Beach, 15 km to Seal Rocks, 72km to Taree Airport, 109k to Newcastle Airport and 289 km to Sydney Airport.

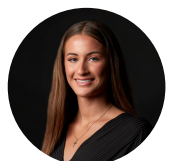


**Norma Dominguez**

Principal - Norma Dominguez Property

**M:** 0422 164 243

**E:** [norma.dominguez@smileelite.com](mailto:norma.dominguez@smileelite.com)



**Cielo Powditch**

Sales Associate to Norma Dominguez

Property

**M:** 0478 108 331

**E:** [cielo.powditch@smileelite.com](mailto:cielo.powditch@smileelite.com)

\*All the above distances are approximates.

Impeccably designed and meticulously maintained, this rural retreat is a rare opportunity to own a slice of paradise.

\*Disclaimer - All information contained herein is obtained from property owners or third-party sources that we believe are reliable. We have no reason to doubt its accuracy, however we cannot guarantee it. All interested person/s should rely on their enquiries.

### Features

Water Tank  
3 Toilets  
Built-In Robes  
2 Ensuites  
Floorboards  
2 Living Areas  
Open Fireplace  
Pet Friendly  
Balcony  
Deck  
Outside Entertaining Area  
Remote Garage Door  
Shed  
Air Conditioning

### Land size

25.00 Ac

### Council rates

\$659 per qtr

### Estimated Rent

1000



**Norma Dominguez**

Principal - Norma Dominguez Property

**M:** 0422 164 243

**E:** [norma.dominguez@smileelite.com](mailto:norma.dominguez@smileelite.com)



**Cielo Powditch**

Sales Associate to Norma Dominguez Property

**M:** 0478 108 331

**E:** [cielo.powditch@smileelite.com](mailto:cielo.powditch@smileelite.com)

2991 The Lakes Way, Tarbuck Bay

Scale in metres. Dimensions are approximate. All information contained herein is gathered from sources we believe to be reliable, however we cannot guarantee its accuracy and interested persons should rely on their own enquiries.