



1a Vasey Grove, Donvale AUCTION

Single level living on your own title

There's much to love about this spacious, single-level home on an easy-care allotment; it's on its own title, it has its own street frontage, and it offers a spacious, flexible floorplan that can be used in a variety of ways to suit your individual needs.

The federation-inspired abode offers a generous, light-filled living room, as well as three robed bedrooms, a central bathroom, and a separate toilet. The master bedroom is close to the entry, with direct access to the bathroom, whilst the second bedroom is located privately at the rear. The third bedroom is adjacent to the home's sizeable kitchen-dining space where you'll find stainless steel appliances and the convenience of a dishwasher; it has the flexibility to be used as a home office or second living area, based on your needs at the time. Outdoor living is also well catered for with a private courtyard, and an expansive undercover alfresco area for relaxing, dining or entertaining family and friends.

Features

- 1 Toilet
- Built-In Robes
- 1 Living Area

Land size

232.00 Sqm



Ingrid Ward

Principal - Ingrid Ward Property

M: 0448 300 764

E: ingrid.ward@smileelite.com



Ingrid Ward

Principal - Ingrid Ward Property

M: 0448 300 764

E: ingrid.ward@smileelite.com

Auction

14th Dec 2022 6:30PM



Ingrid Ward

Principal - Ingrid Ward Property

M: 0448 300 764

E: ingrid.ward@smileelite.com



Ingrid Ward

Principal - Ingrid Ward Property

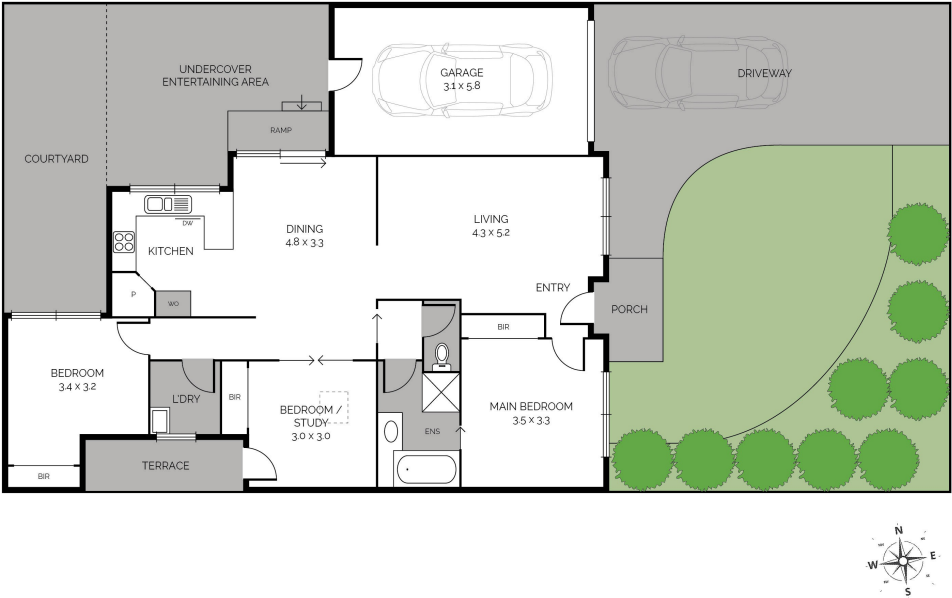
M: 0448 300 764

E: ingrid.ward@smileelite.com

Auction

14th Dec 2022 6:30PM

1A VASEY GROVE, DONVALE / INTERNAL 115m²



Scale in metres. Dimensions are approximate. All information contained herein is gathered from sources we believe to be reliable, however we cannot guarantee its accuracy and interested persons should rely on their own enquiries.

Scale in metres. Dimensions are approximate. All information contained herein is gathered from sources we believe to be reliable, however we cannot guarantee its accuracy and interested persons should rely on their own enquiries.