



517 Pinchin Road, Goolmangar FOR SALE



A Room With a View

Located just 15 minutes to the Lismore CBD, set on 18.05Ha of land, 517 Pinchin Road is spectacularly breathtaking and unique. After ascending the driveway, approximately 100m in altitude, through old growth rainforest, where fireflies dance at dusk, there's a feeling of arriving on top of the world. With magnificent 180 degree views over the Keerrong Valley, to the north of the Terania Creek Valley and onto Mount Nardi and the nightcap National Park - the views need to be seen to be believed.

Features

- Solar Panels
- Water Tank
- 2 Toilets
- Dishwasher
- 1 Ensuite
- 1 Living Area
- Study
- Deck
- Fully Fenced
- Remote Garage Door
- Secure Parking
- Air Conditioning

Land size

18.05 Ha



Lyn Youngberry
Principal - Lyn Youngberry Property
M: 0411 507 209
E: lyn.youngberry@smileelite.com

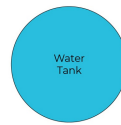
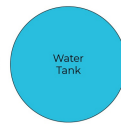
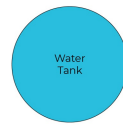
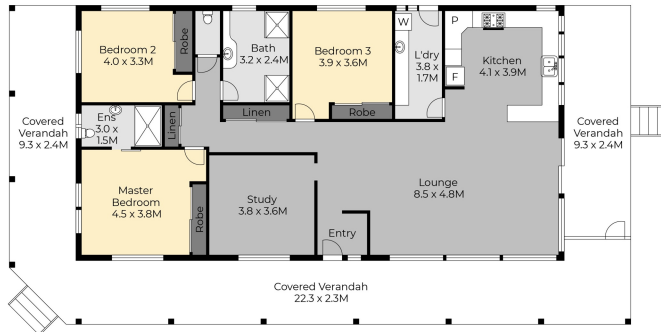
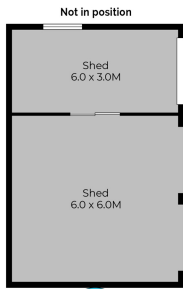
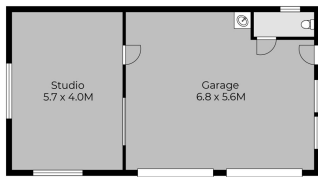


Lyn Youngberry

Principal - Lyn Youngberry Property

M: 0411 507 209

E: lyn.youngberry@smileelite.com



Scale in metres. Dimensions are approximate. All information contained herein is gathered from sources we believe to be reliable, however we cannot guarantee its accuracy and interested persons should rely on their own enquiries.