



#### 4 Honeyeater Place, Malua Bay FOR SALE



##### Priced To Sell - Live In Malua Bay

This spacious residence, featuring four-bedrooms and two-bathrooms, is nestled in the tranquil and scenic Malua Bay, offering an attractive price for potential buyers. The house, with its appealing open-plan design, presents an excellent opportunity for modern living and customization.

Situated on a generous 817 sqm land parcel, the property includes a double garage with remote access and ample open parking spaces for added convenience. Upon entering, you'll find a welcoming lounge area separate from the family living, dining, and kitchen spaces.

The bedrooms are well-proportioned, and equipped with built-in robes for ample storage. The master bedroom includes a walk-in robe and an ensuite, providing a private retreat for relaxation.

Ideal for outdoor enthusiasts, the spacious backyard features generous side rear access, suitable for parking a caravan or boat. Overlooking a reserve, the property offers a tranquil and private space to enjoy the weather, whether entertaining guests or relaxing on the back veranda in your oasis.

Nestled in a serene cul-de-sac among other beautiful homes, this property is located in a peaceful neighbourhood, just a short drive from local shops, schools, clubs, and beautiful beaches. Seize the opportunity to own a piece of the beautiful Malua Bay.

For inspection arrangements, contact me today.

Disclaimer: All information herein is sourced from property owners or reliable third-party sources. While we believe it to be accurate, we cannot guarantee it. Interested parties should conduct their inquiries.

##### Features

2 Living Areas

##### Land size

817.00 Sqm



**Michelle Cottington**

Principal - Michelle Cottington Property

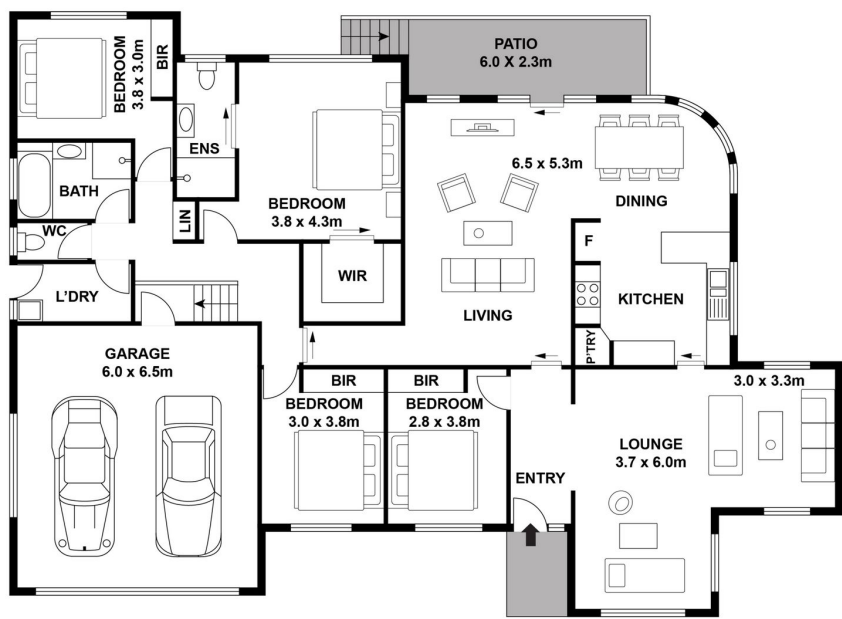
**M:** 0413 552 519

**E:** michelle.cottington@smileelite.com



**Michelle Cottington**  
Principal - Michelle Cottington Property  
**M:** 0413 552 519  
**E:** [michelle.cottington@smileelite.com](mailto:michelle.cottington@smileelite.com)

4 HONEYEATER PLACE, MALUA BAY / TOTAL 190M<sup>2</sup>



Scale in metres. Dimensions are approximate. All information contained herein is gathered from sources we believe to be reliable, however we cannot guarantee its accuracy and interested persons should rely on their own enquiries.

Powered by **SMILEELITE**

Scale in metres. Dimensions are approximate. All information contained herein is gathered from sources we believe to be reliable, however we cannot guarantee its accuracy and interested persons should rely on their own enquiries.