



### 13 Gaudi Boulevard, Corinella FOR SALE



#### Coastal Corinella

Situated in a fabulous position just meters from the Corinella beach and coastal walking trail and the ever popular Fig and Bay Café, this superb quality Metricon home is sure to impress!

This recently built home presents as new and offers spacious light and bright interior with a distinct coastal feel.

The floorplan offers multiple living zones, high ceilings and is of a generous size, boasting quality floor coverings and featuring plantation shutters and quality blinds on all of the windows giving a luxurious feel.

There is a formal lounge to the front of the property with built-in feature cabinets and has double sliding doors to maintain a retreat-like feel. The large Master suite with walk-in robe and stunning ensuite with stone benchtops is also to the front of the property.

Proceed along the hallway to the fabulous kitchen with feature herringbone splashback, stone benchtops, huge Island and walk-in pantry with fridge space. This overlooks both the dining area and large family room offering ample space for the largest of families.

To the rear of the home is a huge theatre or rumpus room overlooking the rear garden and spa. There are three further great sized bedrooms all with built-in robes set in the wing to the rear of the home. These share the lovely family bathroom with a separate shower, bath, and single vanity.

A lovely undercover outdoor area overlooks the neat backyard, with plenty of space for the kids to play, and the beach and coastal walk is only a short stroll away. The double garage with remote entry offers plenty of room for the cars and has internal access to the home.

This fabulous home presents beautifully and will not last long.

- Ducted heating and cooling
- Stunning interiors
- Multiple living zones
- Undercover entertainment area
- Swim spa



**Jacqui Robinson**

Principal - Jacqui Robinson Property

M: 0460 799 750

E: jacqui.robinson@smileelite.com

- 6.6 Kw Solar

Disclaimer: All information contained herein is obtained from property owners or third-party sources which we believe are reliable. We have no reason to doubt its accuracy, however we cannot guarantee it. All interested person/s should rely on their own enquiries.

### Features

Built-In Robes

1 Ensuite

3 Living Areas

2 Open Spaces For Vehicles

Air Conditioning

### Land size

529.00 Sqm



**Jacqui Robinson**

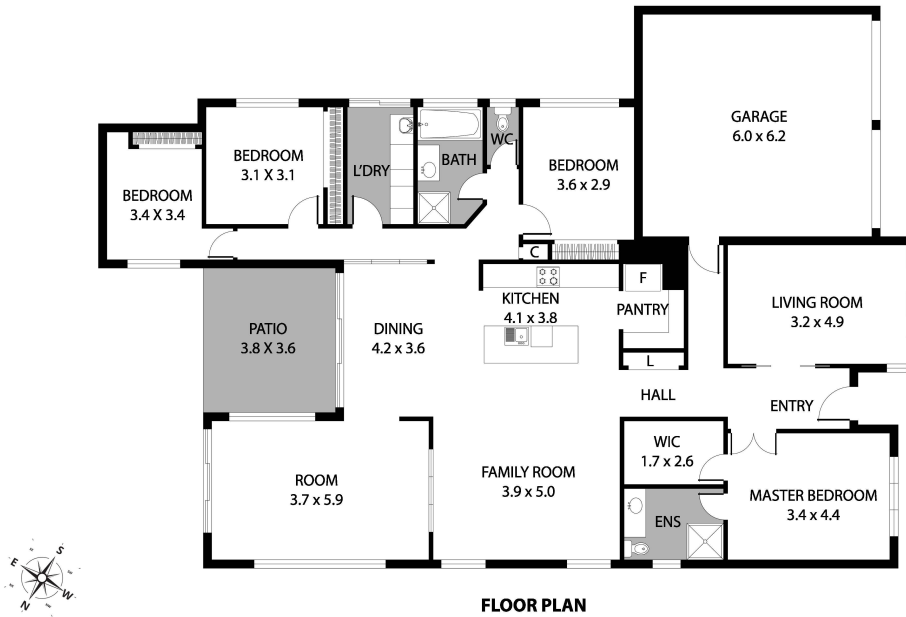
Principal - Jacqui Robinson Property

**M:** 0460 799 750

**E:** [jacqui.robinson@smileelite.com](mailto:jacqui.robinson@smileelite.com)

**JACQUI ROBINSON**  
PROPERTY

13 GAUDI BLVD, CORINELLA VIC 3984/235.6m<sup>2</sup>



Scale in metres. Dimensions are approximate. All information contained herein is gathered from sources we believe to be reliable, however we cannot guarantee its accuracy and interested persons should rely on their own enquiries.

POWERED BY SMILE ELITE™  
PROUD PARTNERS WITH SYDNEY COUNTRY LIVING

Scale in metres. Dimensions are approximate. All information contained herein is gathered from sources we believe to be reliable, however we cannot guarantee its accuracy and interested persons should rely on their own enquiries.