



1/17 Bele Place, Kiama FOR SALE



Your own private oasis, minutes to town or beaches

This could be it! Whether this is your new home or a holiday home...

Kiama makes for a great destination from having famous surfing spots, an invigorating ocean pool for a relaxing dip or if you're just looking for a nice café or restaurant to sit back and take it all in.

This beautiful three-bedroom duplex is positioned on the high side and perched proudly in a very quiet street. When you arrive, you will be surprised at how large this home is. With a spectacular 6m x 6m front balcony that transitions from the open-plan kitchen to living and dining, making it an ideal entertainer. This oasis is definitely a place to call home.

This property offers many features; all the living is on one level, timber flooring, loads of storage, a light-filled open plan and spacious living. Two large bedrooms have built-in wardrobes and the master suite is generous with a walk-in robe and ensuite. All bedrooms have ceiling fans with the kitchen, living and dining complete with a split system air-conditioning unit.

A covered rear back patio is the perfect place to cook the barbecue or keep a watchful eye on the kids as they play in the fully fenced and secured backyard.

- Large family home, holiday home, downsizer or sea change opportunity
- Open-plan living with a fabulous flow to the outdoors
- A lovely backyard with established gardens
- Three large bedrooms all with ceiling fans, the master with ensuite
- Double garage with internal access
- This home is set amongst quality homes and is surrounded by a leafy outlook

Perfectly situated in a quiet and family-friendly street, this gorgeous coastal home encapsulates all the best the area has to offer. Located within 5-minutes of local beaches, shops, cafes, rockpools, markets and the famous coastal walk.

We look forward to showing you this amazing home. A duplex of this size rarely comes to market, so we think you'll need to be quick to inspect.



Monique Field

Principal - Monique Field Property

M: 0403 021 172

E: monique.field@smileelite.com



Phoenix Smith

Associate - Monique Field Property

M: 0421 850 852

E: phoenix.smith@smileelite.com

Call Monique Field to arrange your inspection today.

Features

2 Toilets
Built-In Robes
Dishwasher
1 Ensuite
Floorboards
1 Living Area
Balcony
Deck
Outside Entertaining Area
Split System A/C

Land size

603.00 Sqm



Monique Field

Principal - Monique Field Property

M: 0403 021 172

E: monique.field@smileelite.com

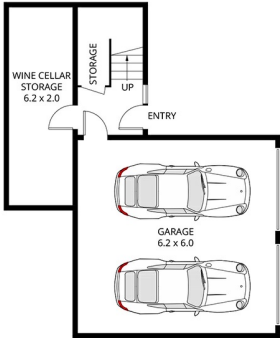


Phoenix Smith

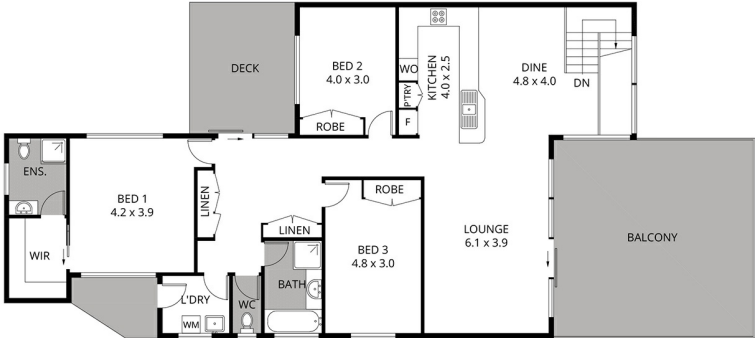
Associate - Monique Field Property

M: 0421 850 852

E: phoenix.smith@smileelite.com



GROUND FLOOR



FIRST FLOOR



Scale in metres. Dimensions are approximate. All information contained herein is gathered from sources we believe to be reliable, however we cannot guarantee its accuracy and interested persons should rely on their own enquiries.