



395 Bobbin Head Road, TURRAMURRA FOR SALE



Space, elegance, quality and grace on three acres

One of the area's best kept secrets, this extraordinary property provides a luxury semi-rural estate in an exclusive North Turramurra setting. Set well back and concealed from the road beyond an electric gated entry, the Georgian inspired mansion rests on over three acres of excellence, backing onto Natural Park and bringing a sense of 'country' to North Shore living, hard-to-find privacy and green serenity.

The German builders of the home constructed and designed it with the flavour of a country castle from their homeland complete with elegant proportions, a parapet roofline and superb pillared entrance that creates an immediate sense of grandeur. The magnificent grounds that surround the home, all completely arable, include sweeping lawns, mature trees and a flood lit, championship tennis court. The property has been tightly held for almost 30 years, loved for its beauty, privacy and elegance.

Timeless, enduring family home

Enduring quality and grace was very much forefront of mind when building and designing the home. The residence starts with a full brick and concrete slab construction, welcoming into a grand double height entry overhung by a striking crystal chandelier and framing a sweeping 'Gone with The Wind' style staircase.

From this entry multiple living zones extend including a gracious formal lounge with marble fireplace, large formal dining room and a substantial family room. French doors open to the glorious and expansive terraces that adjoin the home providing the perfect vantage point from which to enjoy the property and spend time with family and friends.

Nothing could be finer

Beautiful parquetry adorns the floors and updates over the years have kept the home completely current. A stylish contemporary kitchen is a perfect workspace, finished in stone with quality appliances and boasting a servery to the living room. A home office can also be found on the lower level with easy access to the front door, convenient when clients come to visit.

Entertainer's and outdoor lovers paradise



Taylor Snell

Elite Agent - Sydney Country Living

M: 0425 343 276

E: taylor@sydneycountryliving.com.au



Shayne Hutton

Co-Founder/Principal - Sales Lead

M: 0400 420 000

E: shayne@sydneycountryliving.com.au

The outdoor spaces are a paradise for entertainer's and children alike with the vast terraces boasting three retractable awnings for all weather enjoyment and space to host even the grandest of parties. The terraces step down to the sweeping lawns and the over-sized swimming pool that is long enough to do laps. The championship floodlit tennis court has been positioned well away from the home to provide no disruption to family life.

The walk from the home to the end of the property is idyllic, past the aviaries and a rainwater and bore-fed dam that houses a family of turtles and stocks silver perch. The adjoining National Park just extends the property and creates outstanding privacy and a connection with nature. A second double garage can be utilised for machinery storage or a great workshop.

Perfect family comfort

Providing exceptional retreats for the family, the upper level hosts five substantial bedrooms, all bright and cheerful and finished with built-in robes. Taking one third of the upper level is the grand master domain with a large dressing room and walk-in robe plus ensuite bathroom. Spilling off the landing on the upper level is a superb terrace that overlooks the grounds across the dam and into the National Park.

Unrepeatable and a prized find

Family life couldn't be more sublime enhanced by a picture perfect setting and abundant space to accommodate everyone's interests and hobbies. Its long list of extras include ducted air conditioning, a chicken coop, solar panels, lock up garaging plus ample space for four more vehicles at the front and plentiful room for a horse for those that enjoy equestrian pursuits. There is area to park the van caravan or trailer plus a garden terrace at the front bordered by the 'cricket-pitch' level lawns.

Nestled in one of the North Shore's most in-demand pocket, the home is well placed close to every amenity. School, village and rail bus services stop almost at the front door and it's an easy stroll to Ku-Ring-Gai High School, Lady Davidson Hospital, the entrance to Bobbin Head walking tracks and North Turramurra Golf Course. Nature lovers and those that enjoy getting out on the water will appreciate the proximity to Bobbin Head Marina and the boat ramp. The thriving village shops and cafes including Woolworths Metro and popular Turramurra North Public School are just down the road plus the home enjoys easy access to Knox Grammar and Abbotsleigh.

Co-agent - Darren Curtis of Christie's International 0406 761 840

Features

4 Open Spaces For Vehicles

Land size

12,140.00 Sqm



Taylor Snell

Elite Agent - Sydney Country Living

M: 0425 343 276

E: taylors@sydneycountryliving.com.au

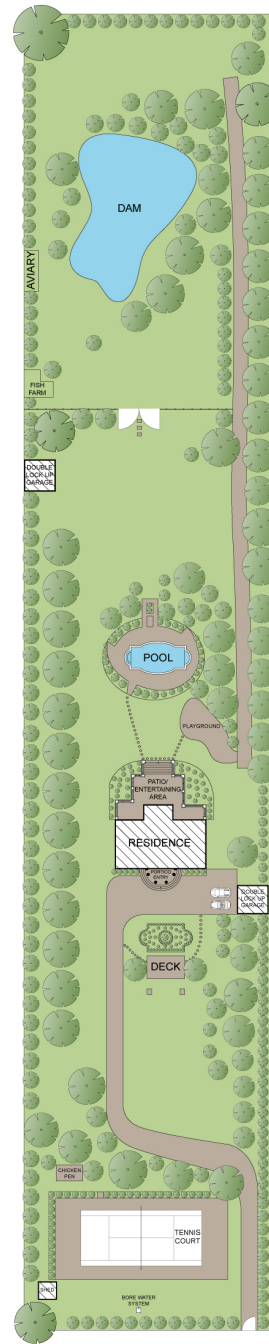
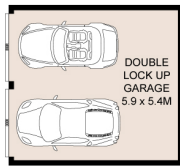
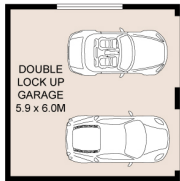
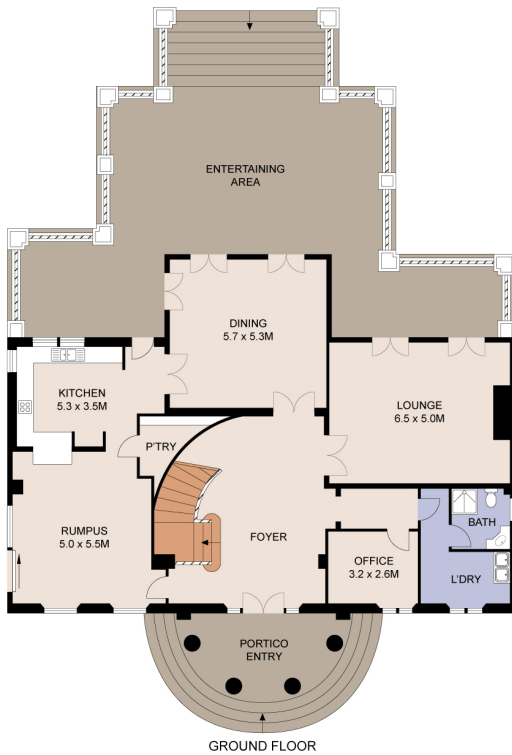
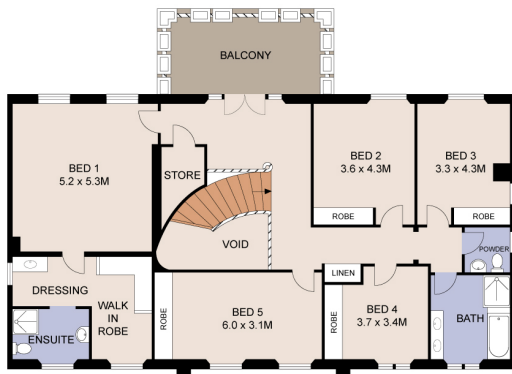


Shayne Hutton

Co-Founder/Principal - Sales Lead

M: 0400 420 000

E: shayne@sydneycountryliving.com.au



TOTAL INTERNAL: 360 m²
TOTAL LAND SIZE: 12626 m²



Plans shown are for presentation purposes only and are not part of any legal document or title. They are subject to errors, omissions, inaccuracies and should not be used as a sole and accurate reference. Interested parties should make their own inquiries using independent sources.

395 BOBBIN HEAD ROAD

TURRAMURRA

Scale in metres. Dimensions are approximate. All information contained herein is gathered from sources we believe to be reliable, however we cannot guarantee its accuracy and interested persons should rely on their own enquiries.