



2/8 Terrara Road, Vermont FOR SALE



Single-level perfection in renowned school zones.

Successfully marketed and Sold by Mark Kainey Property - One of only 4 on the block and well-presented throughout for those who appreciate an inviting living experience over a wonderful single level, this 3 bedroom, 2.5 bathroom residence needs to be at the top of your property short list.

High ceilings and granite detail truly add to this home's inviting allure, and it's design with two fantastic living zones really does open the property up to a variety of purchasers from small families to downsizers. The front formal lounge and dining room is carpeted and has doors opening to the bright north-facing family and meals zone which is enhanced by gorgeous timber flooring. Step on out further through double doors and you get to enjoy all the delights of the undercover alfresco deck and manicured garden which also has northern appeal.

Back inside, the kitchen is sleek and functional with stone and great storage, as well as stainless steel appliances. The master bedroom has access to a walk-in robe and stylish ensuite, with 2 other bedrooms with BIRs neighbouring the central bathroom. Other property features include a laundry with external access, ducted heating, air conditioning, ceiling speakers in central living, and a double remote garage.

Zoned for Vermont Secondary College and Vermont Primary School, you have buses at your door and are so close to local Canterbury Rd/Boronia Rd shops, Brentford Square shops, Forest Hill Chase Shopping Centre, Stephens Reserve, Bellbird Dell Reserve, buses, and Eastlink.

Disclaimer: All information contained herein is obtained from property owners or third-party sources which we believe are reliable. We have no reason to doubt its accuracy, however we cannot guarantee it. All interested person/s should rely on their own enquiries.

Features

Built-In Robes
Air Conditioning



Mark Kainey
Principal - Mark Kainey Property
M: 0419 333 437
E: mark.kainey@smileelite.com

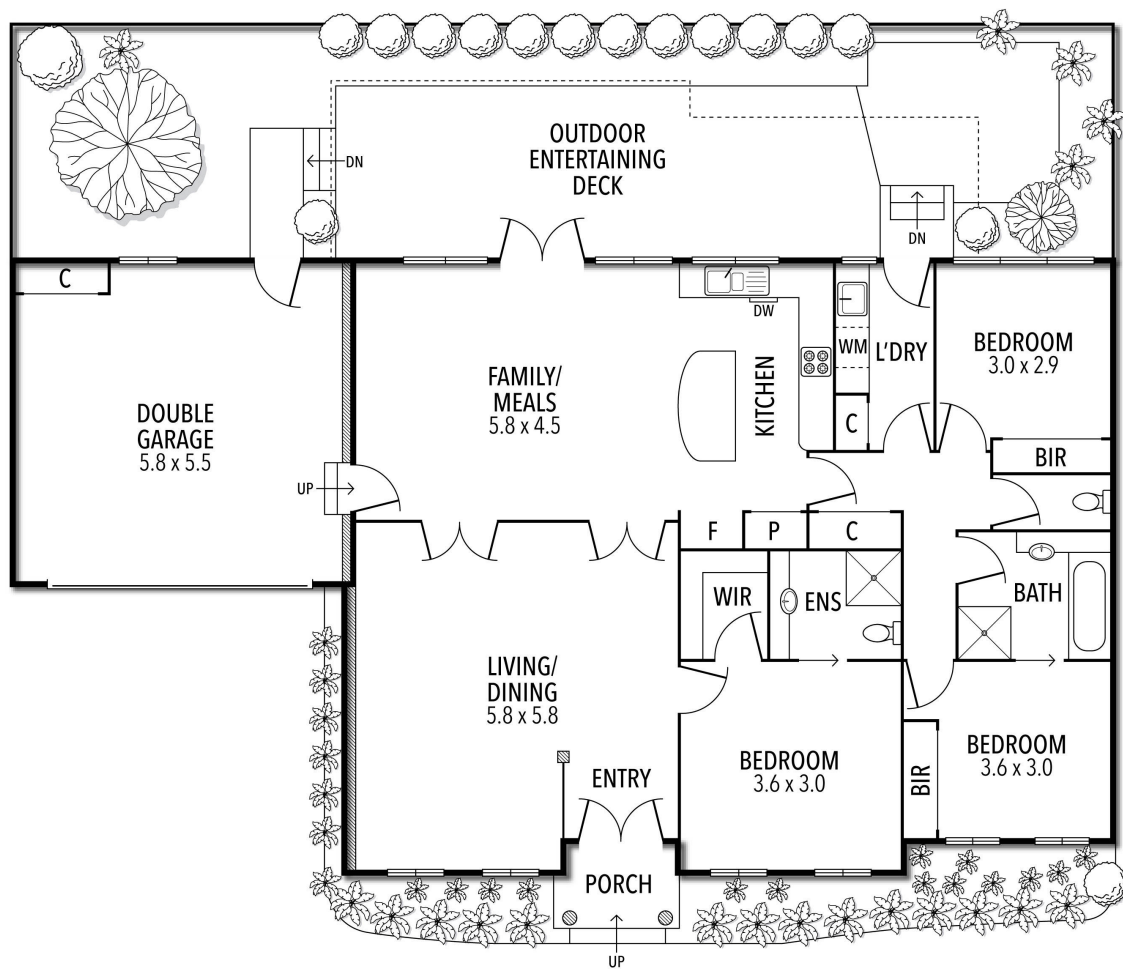


Mark Kainey

Principal - Mark Kainey Property

M: 0419 333 437

E: mark.kainey@smileelite.com

2/8 TERRARA ROAD, VERMONT

THE ABOVE PLAN IS AN ARTIST'S IMPRESSION ONLY, IT INCLUDES ELEMENTS THAT ARE FOR DISPLAY PURPOSES ONLY AND MAY NOT BE TO SCALE.
LANDSCAPING SHOWN IS INDICATIVE ONLY. DIMENSIONS ARE APPROXIMATE.

Scale in metres. Dimensions are approximate. All information contained herein is gathered from sources we believe to be reliable, however we cannot guarantee its accuracy and interested persons should rely on their own enquiries.