



590 The Entrance Road, Wamberal
FOR SALE



Serene Acreage Retreat: Your paradise found in Wamberal

Welcome to your dream retreat in the peaceful and picturesque suburb of Wamberal! Nestled on a sprawling 4.5 acres, this property offers a rare opportunity to create your own slice of paradise. With an original three-bedroom house serving as a canvas for your imagination, the potential to transform this into your dream home or renovate for a handsome return on investment awaits.

Situated in a highly sought-after location, this tranquil estate is perfect for those seeking a serene lifestyle away from the hustle and bustle of city life.

Don't miss this golden opportunity to secure your own acreage retreat in the highly sought-after suburb of Wamberal. With its idyllic location, potential for renovation or redevelopment, and the chance to create your own haven, this property offers endless possibilities for the astute buyer. Contact us today to arrange a private inspection and start envisioning your dream lifestyle!

Features

Solar Hot Water
Solar Panels
Water Tank
1 Ensuite
Balcony
2 Carports
Secure Parking
Air Conditioning

Land size

18,211.00 Sqm



Jodie Warren

Principal - Carlson Warren Property

M: 0481 293 929

E: jodie.warren@smileelite.com

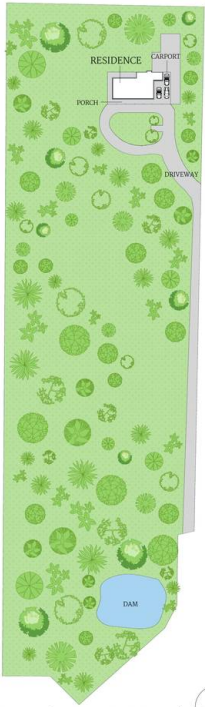
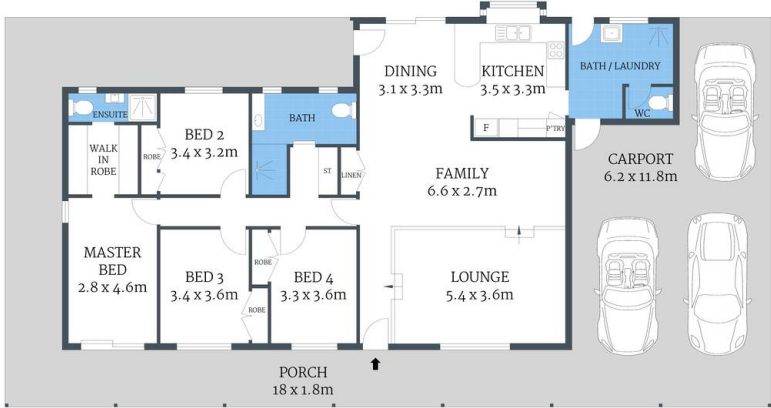


Jodie Warren

Principal - Carlson Warren Property

M: 0481 293 929

E: jodie.warren@smileelite.com



SITE PLAN (NOT TO SCALE)

Approx Internal 149sqm
Land Area 4.5ac

590 THE ENTRANCE ROAD, WAMBERAL

Scale shown in meters. All dimensions herein are approximate and gathered from sources believed to be reliable. Whilst every effort is made for the accuracy of our floor plans, interested parties should rely on their own enquiries.

Scale in metres. Dimensions are approximate. All information contained herein is gathered from sources we believe to be reliable, however we cannot guarantee its accuracy and interested persons should rely on their own enquiries.