



**1410/120 A'Beckett Street, Melbourne**  
**FOR SALE**



**Superb Location With So Much More**

Perfectly located in the heart of Melbourne, this amazing central location takes advantage of the best the CBD has to offer with resort-style allure and world-class amenities.

Fulton Lane offers dedicated spaces for entertaining and lounging with sleek contemporary class, this sensational apartment encompasses all the makings of a convenient inner-city home or a suave addition to a savvy investor's portfolio.

Situated in the esteemed Fulton Lane complex, this modern and thoughtfully designed 2 bedroom, 2 bathroom apartment plus single secure car parking on title, is located just footsteps from the iconic Queen Victoria Market, Flagstaff Parklands and a multitude of shopping precincts all within walking distance.

Charming and well-maintained, the apartment features a stylish kitchen with stone benches, glass splashbacks and premium stainless-steel appliances. Open plan living featuring floor-to-ceiling windows that expand onto a covered private balcony. Featuring built-in robes, ample storage space, a stylish central bathroom, convenient European laundry, reverse-cycle heating, and cooling, and an NBN-ready network.

Resort-style allure is assured by the premium facilities offered at Fulton Lane, highlighted by a 25-metre heated pool, spa, sauna, fully equipped gym, private cinema, garden terrace with BBQ, library, dining room and chef's kitchen. The building also encompasses eco-friendly initiatives such as bicycle facilities, grey-water recycling, water tanks, natural ventilation, and the green-walled facade.

Investors will set and forget this sure-fire portfolio performer, while owner-occupiers can appreciate the class and convenience on offer.

Fully equipped gymnasium, private lift access, secure intercom entry and video-monitored surveillance.

Currently tenanted until May 2024. \$722 per week.

Disclaimer: All information contained herein is obtained from property owners or third-party sources which we believe are reliable. We have no reason to doubt its accuracy, however we



**Mark Kainey**  
Principal - Mark Kainey Property  
M: 0419 333 437  
E: mark.kaine@smileelite.com

cannot guarantee it. All interested person/s should rely on their own enquiries.

## Features

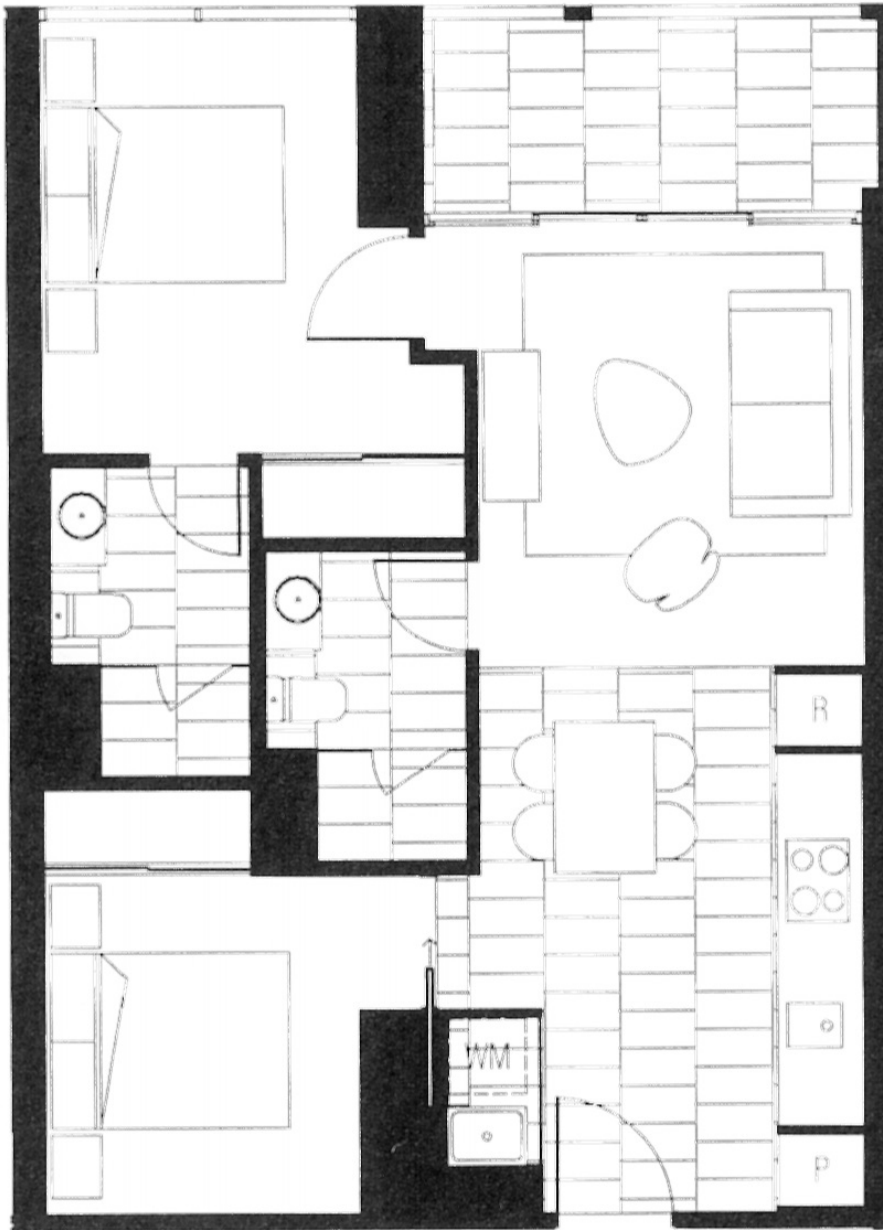


**Mark Kainey**

Principal - Mark Kainey Property

**M:** 0419 333 437

**E:** [mark.kainey@smileelite.com](mailto:mark.kainey@smileelite.com)



Scale in metres. Dimensions are approximate. All information contained herein is gathered from sources we believe to be reliable, however we cannot guarantee its accuracy and interested persons should rely on their own enquiries.