



25 Monterra Avenue, Peakhurst Heights FOR SALE



A Gem in Peakhurst Heights

This meticulously maintained home hits the market for the first time in 65 years. Situated on a 558sqm level block of land presents a rare opportunity for those who appreciate a family-friendly area, located across from Peakhurst South Public School. The proximity to nearby schools, a golf course and shops adds to the convenience and desirability of this home, making it an ideal choice for those seeking a convenient lifestyle. This charming brick family home showcases endless potential, boasting original character and charm.

Features:

- Four generously sized bedrooms, two bathroom home, spacious main bathroom with separate bath/shower
- Open-plan kitchen with ample storage space is equipped with a dishwasher
- Two spacious living areas with parquetry flooring, perfect for relaxation
- Master bedroom with built-in wardrobe, wide picture windows with private leafy outlooks
- The undercover deck area leads to a sun-washed paved courtyard ideal setting for entertaining
- Internal laundry with plenty of storage
- Lock up garage with additional workshop space and long driveway to park another 2/3 cars

Opposite the School, close to Gannons Park, Hurstville Golf Course, transport, coffee shop, etc.

Features

- 2 Toilets
- Built-In Robes
- Floorboards
- 2 Living Areas
- Pet Friendly
- 2 Open Spaces For Vehicles

Land size

558.00 Sqm

Council rates

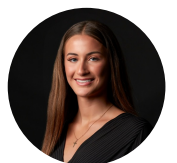


Norma Dominguez

Principal - Norma Dominguez Property

M: 0422 164 243

E: norma.dominguez@smileelite.com



Cielo Powditch

Sales Associate to Norma Dominguez
Property

M: 0478 108 331

E: cielo.powditch@smileelite.com

\$320 per qtr

Water rates

\$112 per qtr



Norma Dominguez

Principal - Norma Dominguez Property

M: 0422 164 243

E: norma.dominguez@smileelite.com

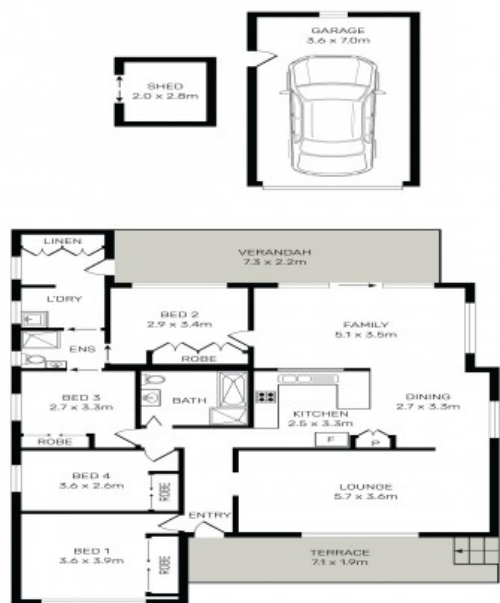


Cielo Powditch

Sales Associate to Norma Dominguez Property

M: 0478 108 331

E: cielo.powditch@smileelite.com



012345

All information contained herein is gathered from all sources we believe to be reliable. However we cannot guarantee its accuracy and interested parties should rely on their own enquiries.

25 Monterra Avenue, Peakhurst Heights

Scale in metres. Dimensions are approximate. All information contained herein is gathered from sources we believe to be reliable, however we cannot guarantee its accuracy and interested persons should rely on their own enquiries.