



## 25 The Gully Road, Berowra FOR SALE



### Sprawling Family Haven

A sprawling family haven capturing breathtaking views of Berowra Valley National Park atop 882 sqm, this versatile home reveals a split-level layout designed to enhance every aspect of daily life. From relaxing in the open plan living/dining zone together to cooking in the gourmet island kitchen or entertaining guests on the huge covered deck that overlooks the sun-drenched pool, it truly caters to a relaxed family lifestyle.

All bedrooms are appointed with built-ins and positioned to maximise privacy including the secluded ground floor parents' retreat that features a walk-in robe, ensuite and patio. Additional highlights such as a media room, home office and guest suite add further appeal.

Located to enjoy a convenient village lifestyle, the property is within walking distance to Berowra Station, Berowra Public School and parks, while moments to the shopping village, cafes and restaurants.

- Move-in ready opportunity with the potential to add value
- Light-filled interiors showcase high cathedral ceilings
- Family-sized bathroom appointed with large spa bath
- Plantation shutters, air conditioning, ceiling fans
- Ample loft storage plus double lock-up garage
- Scope to Airbnb ground floor accommodation

Contact us today and make this home yours.

### Features

Solar Panels  
3 Toilets  
Built-In Robes  
Dishwasher  
1 Ensuite  
2 Living Areas  
Study

### Land size



**Francesca Parrino**

Principal - Francesca Parrino Property

**M:** 0415 651 740

**E:** francesca.parrino@smileelite.com



**Julia Ferreira**

Sales Associate - Francesca Parrino

Property

**M:** 0448 069 199

**E:** julia.ferreira@smileelite.com

**Open**

18th May 2024 @ 11:00AM - 11:30AM

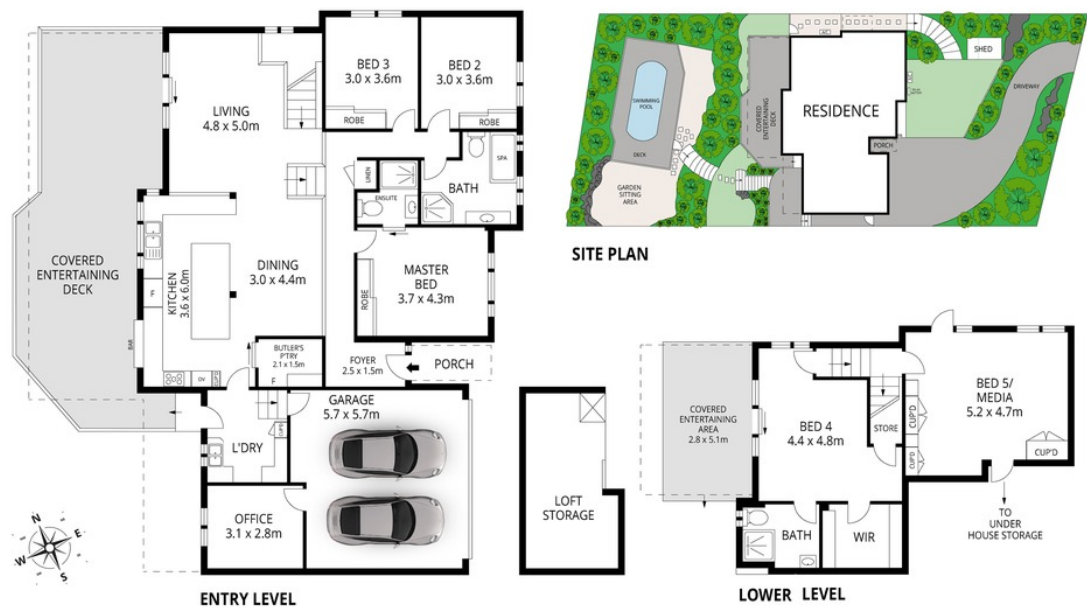
882.00 Sqm



**Francesca Parrino**  
Principal - Francesca Parrino Property  
**M:** 0415 651 740  
**E:** francesca.parrino@smileelite.com



**Julia Ferreira**  
Sales Associate - Francesca Parrino Property  
**M:** 0448 069 199  
**E:** julia.ferreira@smileelite.com  
**Open**  
18th May 2024 @ 11:00AM - 11:30AM



Scale in metres. Dimensions are approximate. All information contained herein is gathered from sources we believe to be reliable, however we cannot guarantee its accuracy and interested persons should rely on their own enquiries.