



## 256A Mt Browne Road, Upper Orara FOR SALE



### Country Road Take Me Home

Situated in a 2.16-hectare old-growth rainforest setting, this comfortable home features a north-facing solar passive design and pine-lined cathedral ceilings. The open plan living room, dining area and kitchen boast timber-lined walls, a sandstone brick feature wall with a log fire, and gyprock. The spacious kitchen includes a pantry and ample bench space. The home has three large bedrooms, with the 4th bedroom/office being a good size. Throughout the property, you'll find western red cedar windows and doors, adding to the natural and earthy atmosphere. Although the bathroom is a bit dated, it is functional and includes a large bath for relaxation.

The property also includes a double carport, well-established gardens with prize-winning Camellias, a chook shed and run, and the potential for fruit tree planting. Water supply is from 2 x 5000-gallon concrete tanks, totalling just under 38,000 litres.

An added bonus is the separate and secluded large timber studio, which offers the potential for conversion into accommodation (STCA). A large dam near the studio adds to the property's appeal. Despite its privacy, the property is conveniently located just a 14-minute drive to Coffs Harbour, offering access to amenities such as dining, shopping, schooling, and healthcare facilities.

### Features



**Brett Weick**

Principal - Brett Weick Property

M: 0448 679 697

E: [brett.weick@smileelite.com](mailto:brett.weick@smileelite.com)

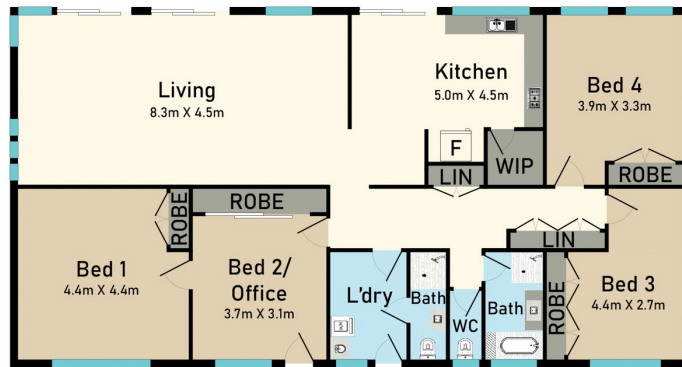


**Brett Weick**

Principal - Brett Weick Property

**M:** 0448 679 697

**E:** [brett.weick@smileelite.com](mailto:brett.weick@smileelite.com)



### 256A Mount Browne Road, Upper Orara

\* Dimensions are approximate and for illustrative purposes only



Scale in metres. Dimensions are approximate. All information contained herein is gathered from sources we believe to be reliable, however we cannot guarantee its accuracy and interested persons should rely on their own enquiries.