



21 Gordon Street, Mullumbimby FOR SALE



Discover Contemporary Luxury in the Heart of Town

In a wide, leafy street in the heart of beautiful Mullumbimby, this exquisitely-appointed family residence has been completely transformed by a bespoke renovation. Set amidst landscaped native gardens, the classic heritage-style facade gives way to meticulously executed interiors designed for a contemporary family lifestyle of effortless comfort and luxury.

Property Specifications:

- Fully renovated three bedroom residence just a stroll to town
- Beautifully landscaped front garden by local artisan Martin Martini
- Gourmet chef's kitchen with bespoke cabinetry and micro-cement island bench
- Two separate living areas plus multiple outdoor decks
- Divine master suite features a luxurious private ensuite
- Main covered entertaining deck with built-in gas BBQ kitchen
- Classic VJ panels, hardwood flooring, fireplace and bay window
- High tech features include a built-in Sonos system, instant hot water
- Ducted central heating and cooling system for year-round comfort
- Oversized backyard with rear-lane access and space for a pool STCA
- Just 450m to the main street's restaurants, boutiques and The Banya
- 14 mins to Brunswick Main Beach or 20 mins to Byron Bay

Transformed by a meticulous renovation, this beautifully-appointed Mullumbimby haven reveals a choice of indoor/outdoor living areas created for those who love to entertain. Enveloped by native landscaped gardens, it's within walking distance to the eclectic heart of town.

Features

- 2 Toilets
- Built-In Robes
- Dishwasher
- 1 Ensuite
- Floorboards
- 2 Living Areas
- Open Fireplace
- Study
- Deck



Karin Heller

Licensed Agent - Kim Jones Property

M: 0409 177 659

E: karin.heller@smileelite.com

Open

20th Jul 2024 @ 11:30AM - 12:00PM

2 Open Spaces For Vehicles

Patio

Secure Parking

Shed

Ducted Cooling

Ducted Heating

Land size

675.00 Sqm



Karin Heller

Licensed Agent - Kim Jones Property

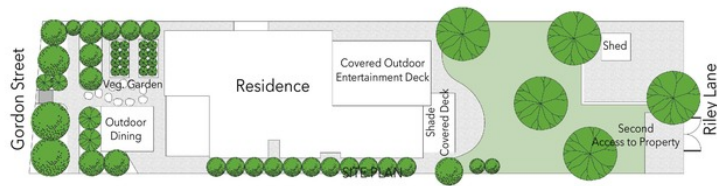
M: 0409 177 659

E: karin.heller@smileelite.com

Open

20th Jul 2024 @ 11:30AM - 12:00PM

21 Gordon Street
MULLUMBIMBY
Land Size 675m²



FLOOR AREA SIZES
Internal 135 m²
External 100 m²
Total 235 m²

PROPERTY DETAILS
 - 3
 - 2
 - 2



Scale in metres. Dimensions are approximate. All information contained herein is gathered from sources we believe to be reliable, however we cannot guarantee its accuracy and interested persons should rely on their own enquiries.