



6/8-10 Ernest Street, Crestwood FOR SALE



Charming Townhouse in Crestwood: Ideal Living or Investment Opportunity

Welcome to 6/8-10 Ernest St, Crestwood, where comfort meets convenience in a small, well-maintained complex. This delightful townhouse is perfectly situated just minutes from local shops, schools, and parks, offering an easy lifestyle and an excellent investment opportunity.

Key Features:

- Open Plan Living: Enjoy a spacious open-plan kitchen, meals, and family room designed for modern living
- Main Bedroom with Ensuite: The main bedroom features a private ensuite for added convenience
- Built-In Robes: All bedrooms come with built-in robes, providing ample storage space
- Modern Kitchen: Equipped with stainless steel appliances, including a gas cooktop, wall oven, and an island bench with stone benchtops
- Quality Bathrooms: The main bathroom includes a separate bath and shower, tasteful lighting, and wall-to-floor tiling, plus a separate toilet
- Stylish Touches: Tiled traffic areas, downlights throughout, and quality window coverings enhance the interior appeal
- Comfortable Living: New electric ducted reverse cycle air conditioning and a continuous hot water system ensure year-round comfort
- Additional Features: A water tank, Colorbond fencing, courtyard, storage space, roller shutters and a double lock-up garage with internal access add to the home's practicality
- Secure and Private: Carpeted bedrooms and a security screen to the front door provide extra comfort and security
- Located with easy access to arterial roads leading to the ACT and the airport, this property is perfect for families, professionals, and investors alike
- Rates: \$669 per/qu
- Strata: \$568 per/qu

Features

Water Tank
Built-In Robes
Dishwasher
1 Ensuite
1 Living Area
NBN Available



Mark Higgs

Principal – Mark Higgs Property

M: 0402 419 927

E: mark.higgs@smileelite.com

Fully Fenced
Remote Garage Door
Secure Parking
Ducted Cooling
Ducted Heating

Land size

215.00 Sqm

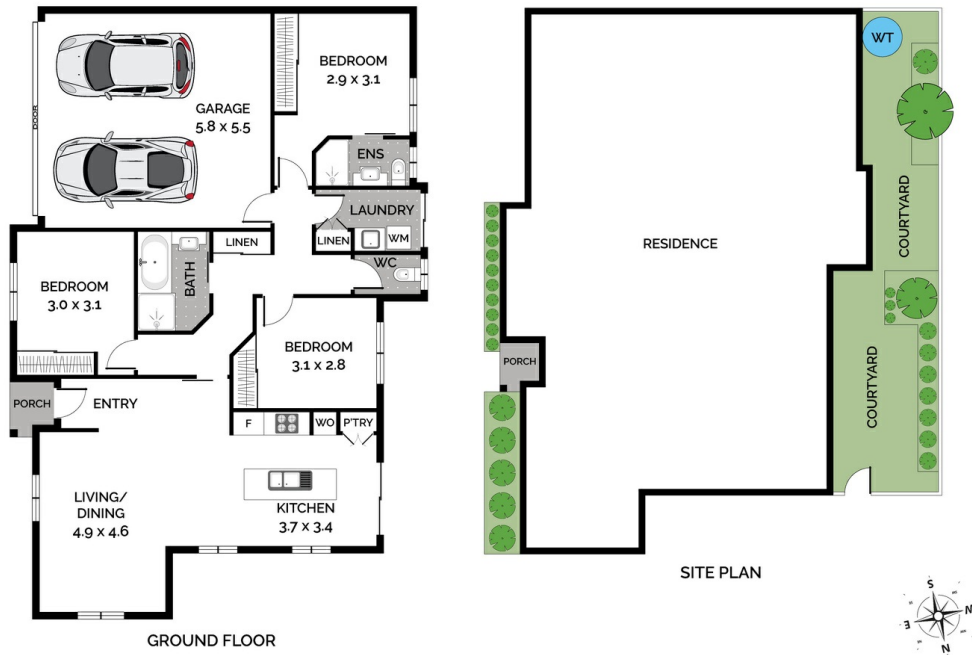


Mark Higgs

Principal – Mark Higgs Property

M: 0402 419 927

E: mark.higgs@smileelite.com



Scale in metres. Dimensions are approximate. All information contained herein is gathered from sources we believe to be reliable, however we cannot guarantee its accuracy and interested persons should rely on their own enquiries.