



## 423-528 Lower Buckra Bendinni Road, Buckra Bendinni AUCTION



### Magnificent Land, Magnificent Water!

A high-producing 216-hectare (544-acre) property is available for consideration. It features three large dams and frontage to Buckra Bendinni Creek, making it ideal for various agricultural pursuits. Currently operating as a high-quality dairy farm, the property includes a 36-unit rotary dairy, silage pits, feeding pads, and automated calf-rearing facilities. The farm is operated as a family business, milking around 220 cows with a history of share-farming up to 450 cows. The property offers stunning views of the mountains and the surrounding area. It is being sold on a W.I.W.O. basis or bare, depending on your requirements.

#### Location:

- Minutes from Bowraville
- 20 minutes to Macksville
- 25 minutes to coastal beaches
- Less than an hour to Coffs Harbour

#### Key Features:

- Highly Improved Pasture: Rye grass for winter, clover, and Kikuyu for summer
- Sustainable Energy: 30kW solar system on the dairy, reducing annual costs
- Diverse Land: Undulating country, prime creek flats, and productive hills
- Infrastructure: Four large machinery sheds/workshops for storage and repairs
- Accommodation: Six houses, five rented, plus a main homestead with stunning views
- Water Security: 246 megalitre licence, irrigation points, and creek access
- Versatile Titles: Five titles offering subdivision potential
- Passive Income: Generates over \$120,000 approx. yearly from rentals and Hipcamp

This property presents a rare opportunity to acquire quality, highly productive acreage on the Mid-North Coast.

Disclaimer: All information contained herein is obtained from property owners or third-party sources which we believe are reliable. We have no reason to doubt its accuracy, however we cannot guarantee it. All interested person/s should rely on their own enquiries.

#### Features



**Brett Weick**  
Principal - Brett Weick Property

M: 0448 679 697

E: [brett.weick@smileelite.com](mailto:brett.weick@smileelite.com)

**Auction**  
3rd Sep 2024 12:30PM

**Land size**

535.60 Ac



**Brett Weick**

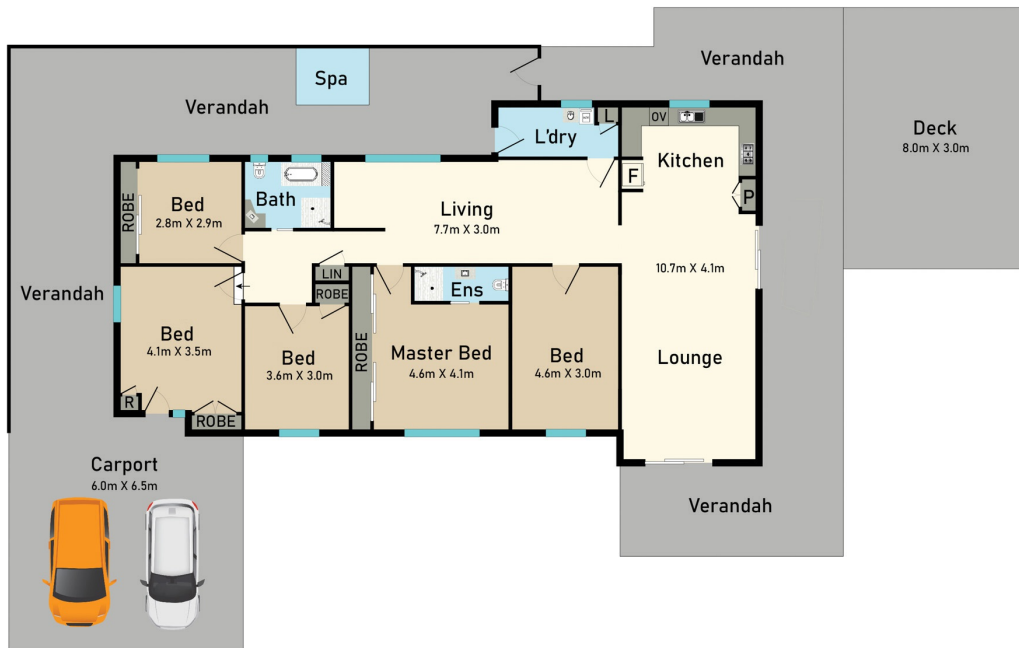
Principal - Brett Weick Property

**M:** 0448 679 697

**E:** [brett.weick@smileelite.com](mailto:brett.weick@smileelite.com)

**Auction**

3rd Sep 2024 12:30PM



528 Lower Buckrabendinni Road, Buckra Bendinni NSW 2449

\* Dimensions are approximate and for illustrative purposes only



Scale in metres. Dimensions are approximate. All information contained herein is gathered from sources we believe to be reliable, however we cannot guarantee its accuracy and interested persons should rely on their own enquiries.