

### 11 Caladenia Close, ELANORA HEIGHTS FOR SALE



#### Architecturally designed estate with panoramic ocean views

This is an exquisite, architecturally designed estate set across nearly five acres with stunning gardens, expansive lawns and resort amenities; boasting panoramic ocean views, it's a million miles from everyday cares, yet less than 40 minutes from the city.

- Exclusive cul-de-sac position with views in every direction
- Graceful lines; grand entrance with double height ceilings
- Superb choice of formal and casual living and dining space
- Two custom-designed offices ideal for working from home
- Separate billiards room; chefs' kitchen with walk-in pantry
- Travertine terraces, 15m infinity pool/spa and pool house
- Expansive decks, alfresco kitchen, championship tennis court
- Private golf hole, zoned and irrigated gardens and lawns
- Sumptuous master with walk-in robes, spa ensuite, terrace
- Gorgeous upper level bedrooms include bespoke cabinetry
- Ducted/zoned climate control, wine cellar, three fireplaces Triple garage + portico, full security, ample storage space

#### Features

Alarm System  
Built-In Robes  
Floorboards  
Balcony  
6 Carports  
Inground Pool  
Secure Parking  
Air Conditioning

#### Land size

5.00 Ac



**Shayne Hutton**

Co-Founder/Principal - Sales Lead

**M:** 0400 420 000

**E:** shayne@sydneycountryliving.com.au

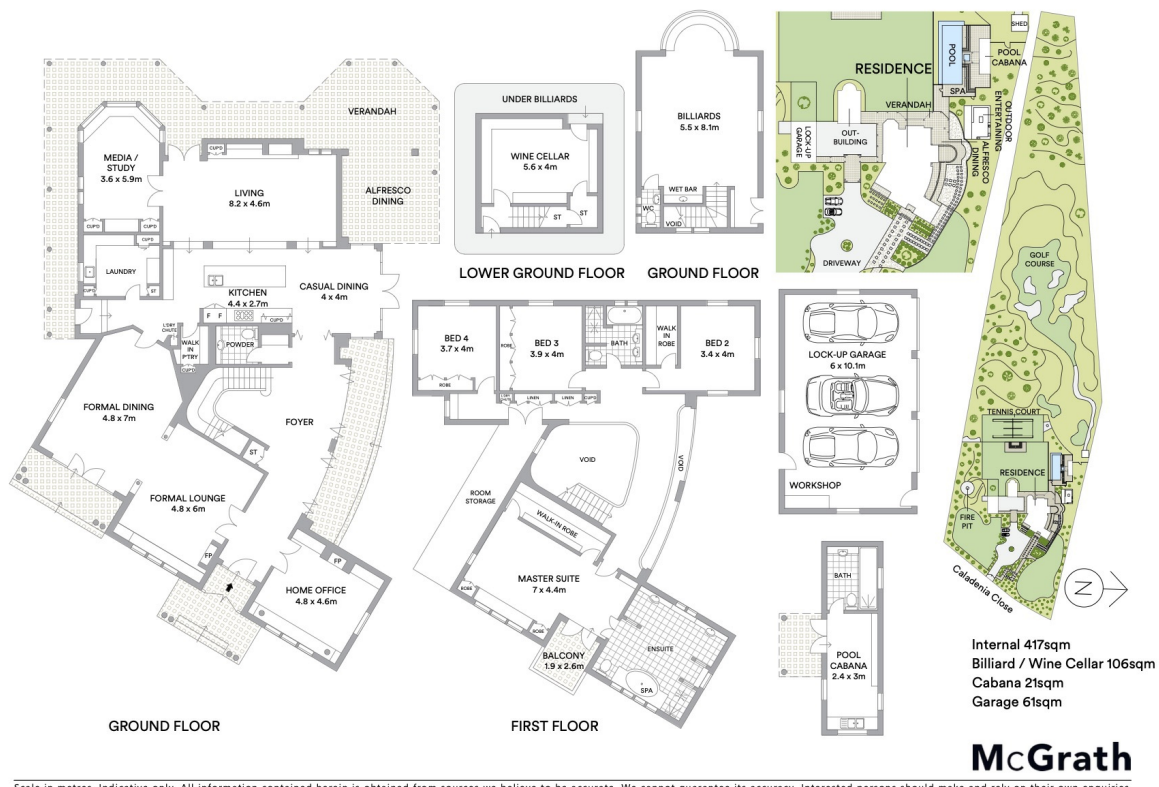


**Shayne Hutton**

**Co-Founder/Principal - Sales Lead**

**M:** 0400 420 000

**E:** [shayne@sydneycountryliving.com.au](mailto:shayne@sydneycountryliving.com.au)



Scale in metres. Indicative only. All information contained herein is obtained from sources we believe to be accurate. We cannot guarantee its accuracy. Interested persons should make and rely on their own enquiries.

Scale in metres. Dimensions are approximate. All information contained herein is gathered from sources we believe to be reliable, however we cannot guarantee its accuracy and interested persons should rely on their own enquiries.