



2 Narambi Close, Berowra Heights FOR SALE

Well located entry-level home with scope to upgrade or develop (STCA)

Occupying a 740sqm corner block, this solid home offers the potential, space and location to be transformed into an idyllic family retreat.

Comfortable as is, the single-level layout reveals well-maintained interiors, ready to be moved into now with the scope to upgrade in the future.

The home showcases a combined living, dining room that flows to a neat sunny kitchen with space for casual meals, four well-proportioned bedrooms including a master with built-ins and a potential home office, a full bathroom complete with a separate bath and shower plus off-street parking. There's also a large backyard that provides access for a granny flat development (STCA).

Its quiet cul-de-sac setting is a stroll to village shops and Barnett's Lookout, while just steps to Berowra Station bus services for commuters. Multiple schools are nearby as well as parks, bush tracks and Berowra Waters.

Disclaimer: All information contained herein is obtained from property owners or third-party sources which we believe are reliable.

Features

Built-In Robes
2 Open Spaces For Vehicles

Land size

740.00 Sqm



Francesca Parrino

Principal - Francesca Parrino Property

M: 0415 651 740

E: francesca.parrino@smileelite.com



Julia Ferreira

Sales Associate - Francesca Parrino
Property

M: 0448 069 199

E: julia.ferreira@smileelite.com



Francesca Parrino

Principal - Francesca Parrino Property

M: 0415 651 740

E: francesca.parrino@smileelite.com



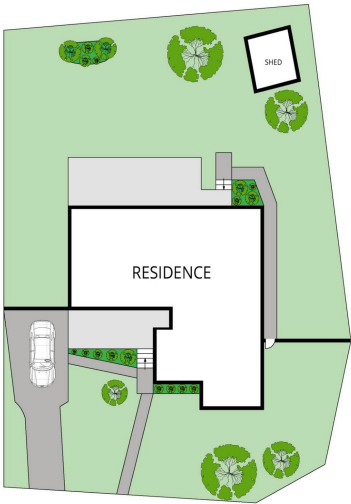
Julia Ferreira

Sales Associate - Francesca Parrino Property

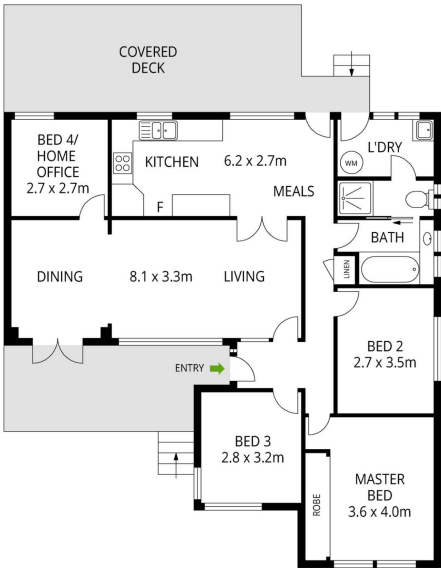
M: 0448 069 199

E: julia.ferreira@smileelite.com

2 NARAMBI CLOSE, BEROWRA HEIGHTS



SITE PLAN



Scale in metres. Dimensions are approximate. All information contained herein is gathered from sources we believe to be reliable, however we cannot guarantee its accuracy and interested persons should rely on their own enquiries.

Scale in metres. Dimensions are approximate. All information contained herein is gathered from sources we believe to be reliable, however we cannot guarantee its accuracy and interested persons should rely on their own enquiries.