



18/8-10 Fraser Street, Westmead
FOR SALE



Striking penthouse of exquisite views, light and space

Perfectly positioned on the top floor of a boutique security block of only three levels, this stunning penthouse unveils a highly sought-after lifestyle brimming with ease, comfort and privacy.

Open the front door and you are greeted by bright open plan interiors and the expansive combined living and dining room which flows effortlessly out onto a massive covered entertainers' terrace, ideal for young kids and flaunting panoramic district views from all sides. An oversized kitchen is sure to impress and comes complete with stone benchtops, gas cooking and a dishwasher and there is split system air conditioning to be enjoyed throughout.

The expansive three-bedroom layout is instantly impressive; two of the well-sized double bedrooms bathe in the prized north sun, one of them opens easily to a secluded undercover terrace and all of them are complete with a built-in or robes plus additional storage.

Features

- Built-In Robes
- 1 Living Area
- 1 Open Spaces For Vehicle



Barry Devine
Principal - Barry Devine Property
M: 0449 175 108
E: barry.devine@smileelite.com

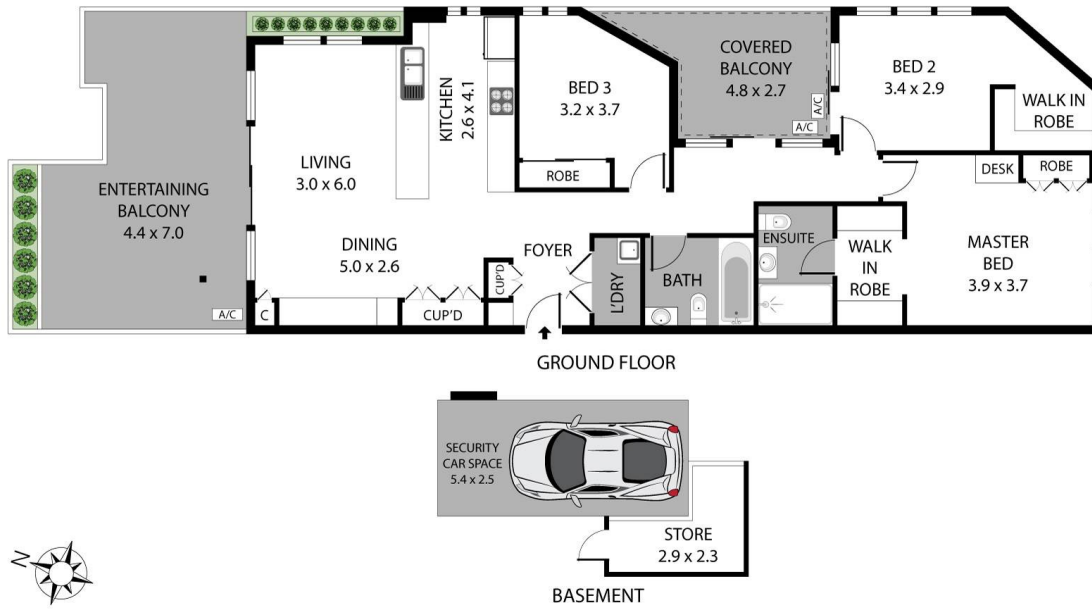


Barry Devine

Principal - Barry Devine Property

M: 0449 175 108

E: barry.devine@smileelite.com



Scale in metres. Dimensions are approximate. All information contained herein is gathered from sources we believe to be reliable, however we cannot guarantee its accuracy and interested persons should rely on their own enquiries.