



6 De Chair Road, Narraweena
FOR SALE



Renovator's dream in sought-after Narraweena pocket

Proudly presented to the market for the first time in 45 years and showcasing glistening ocean glimpses and a superb sense of privacy and space, this excellent family home awaits. It occupies an expansive 638sqm landholding and is enhanced by a prized north rear aspect, generous proportions and original character features. In original condition, it is entirely liveable yet offers exciting scope to add value and capitalise (STCA) in an outstanding location.

As soon as you open the door you are greeted with the original charm of the place. A spacious combined living room adjoins an airy sunroom with lots of natural light and captures lovely ocean glimpses.

An original dine-in kitchen unveils plenty of space for cooking and leads to a covered alfresco patio ideal for low-key evenings with friends and family, but the real showstopper is the oversized backyard which lends itself to a modern upgrade and has plenty of space for a swimming pool, veggie gardens and a cubby if desired!

Features

- 2 Toilets
- Built-In Robes
- 1 Living Area
- 3 Open Spaces For Vehicles

Land size

638.00 Sqm



Barry Devine

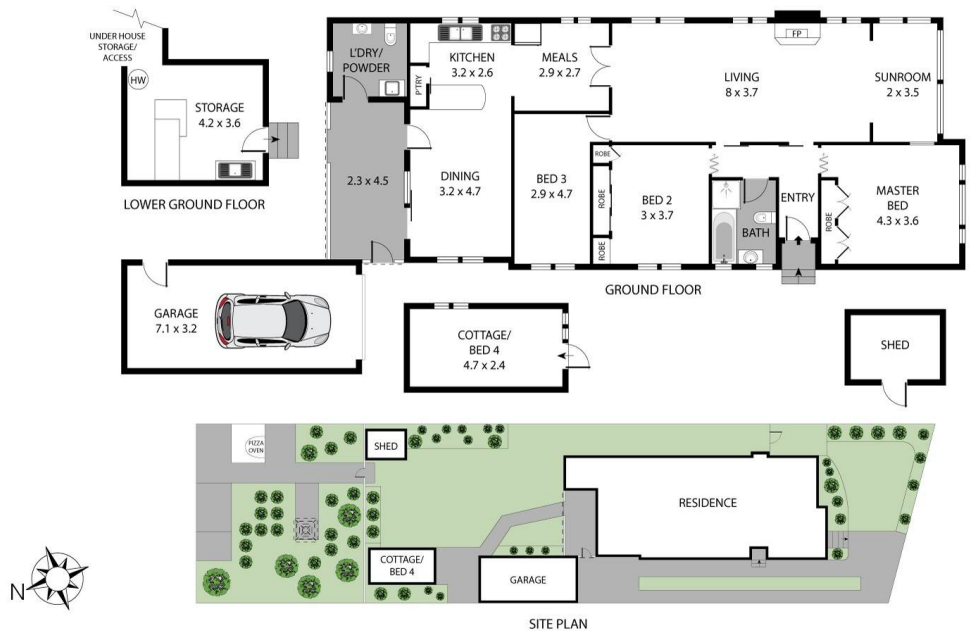
Principal - Barry Devine Property

M: 0449 175 108

E: barry.devine@smileelite.com



Barry Devine
Principal - Barry Devine Property
M: 0449 175 108
E: barry.devine@smileelite.com



Scale in metres. Dimensions are approximate. All information contained herein is gathered from sources we believe to be reliable, however we cannot guarantee its accuracy and interested persons should rely on their own enquiries.