



68 Island Point Road, St Georges Basin FOR SALE



Entry Level Opportunity

Now this could be the one that you have been waiting for!

An entry level opportunity in the heart of St Georges Basin.

This Beachcomber is in original condition and will respond well to a revamp.

The home is situated within an easy walk to the IGA shopping centre, Cooee Hotel, Artisan Bakery and is in the middle of the high growth region of St Georges Basin.

The deep-water boat ramp is just minutes down the road and an easy 10 - 15-minute drive to cafés and beaches of Huskisson and Vincentia.

Property features:

- Three bedrooms, one bathroom, open plan living
- Front deck with water glimpses
- Large rear entertaining deck
- Storage and garaging space under home for four cars
- Fenced rear yard with drive through access
- Surrounded by quality homes
- 696sqm block, zoned R2
- Great location close to everything

There are few opportunities to acquire a position along this elevated strip and at this price, we are literally giving the house away and you are only paying for the land.

Features

1 Toilet

Land size

696.00 Sqm



Trish Broome

Principal - Trish Broome Property

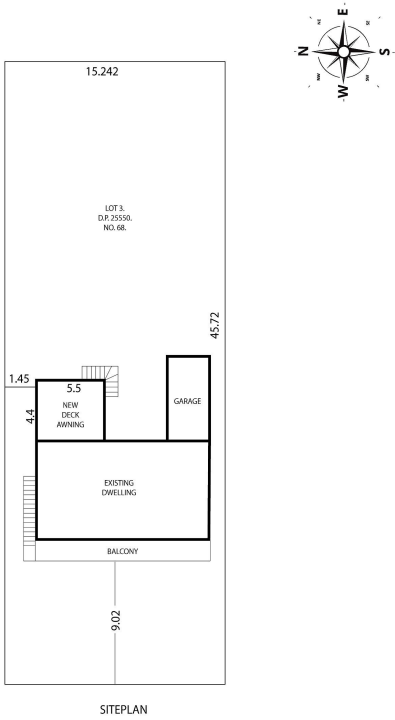
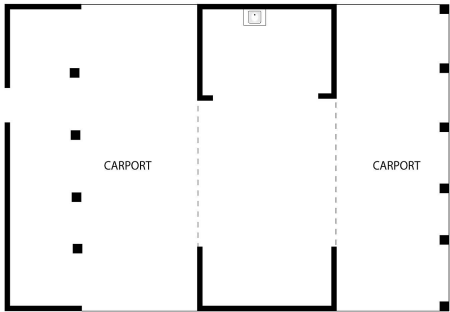
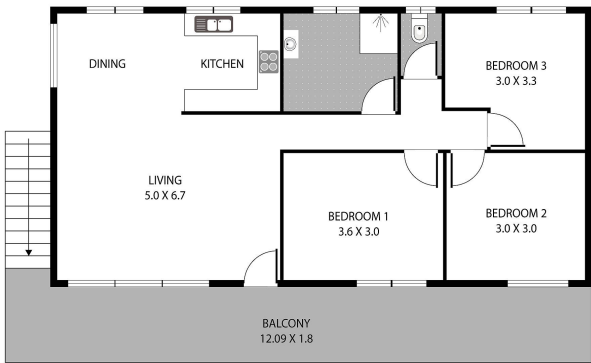
M: 0447 661 388

E: trish.broome@smileelite.com



Trish Broome
Principal - Trish Broome Property
M: 0447 661 388
E: trish.broome@smileelite.com

68 ISLAND POINT ROAD, SANCTUARY POINT



Scale in metres. Dimensions are approximate. All information contained herein is gathered from sources we believe to be reliable, however we cannot guarantee its accuracy and interested persons should rely on their own enquiries.

Scale in metres. Dimensions are approximate. All information contained herein is gathered from sources we believe to be reliable, however we cannot guarantee its accuracy and interested persons should rely on their own enquiries.