



33 Adaleigh Street, Yarraville AUCTION

A timeless classic with future potential

This double-fronted 1940s bungalow on a prime 477m² (approx) allotment has been in the one family since built, but it's now time for a new owner to enjoy all it has to offer.

The home, which offers a low-maintenance weatherboard-cladded exterior, boasts a range of original features, including period decorative ceilings and cornices, picture rails, and high ceilings throughout. There are two generously proportioned bedrooms, and these are serviced by a renovated bathroom offering a walk-in shower and a separate toilet. The living room is expansive, with a decorative mantle and surround, adding a point of interest to the space, which flows seamlessly to a light-filled dining room and a spacious kitchen meals area adjoining a flexible utility zone.

Outdoors you'll enjoy garden surrounds that feature roses, lavender, and many fruit trees, which create a delightful edible landscape, with the scope of the land allowing the new owner to add to the existing accommodation over time if desired, adding further value to the property (STCA).

Features

- 1 Toilet
- Alarm System
- Built-In Robes
- 1 Living Area
- Air Conditioning

Land size

477.00 Sqm



Ingrid Ward
Principal - Ingrid Ward Property

M: 0448 300 764

E: ingrid.ward@smileelite.com

Auction

24th Nov 2022 6:30PM



Ingrid Ward

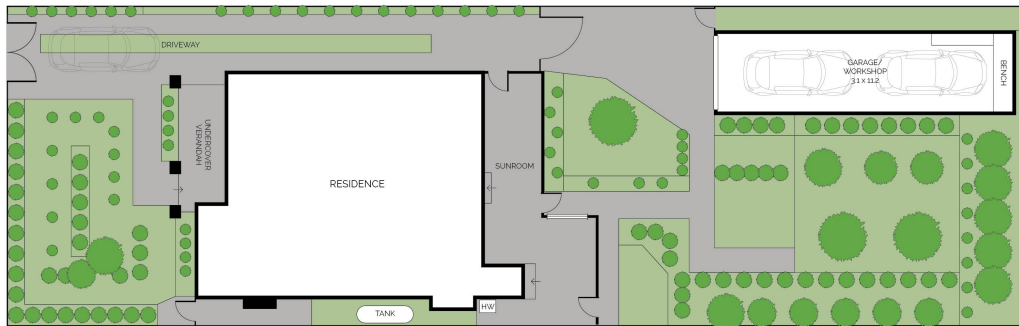
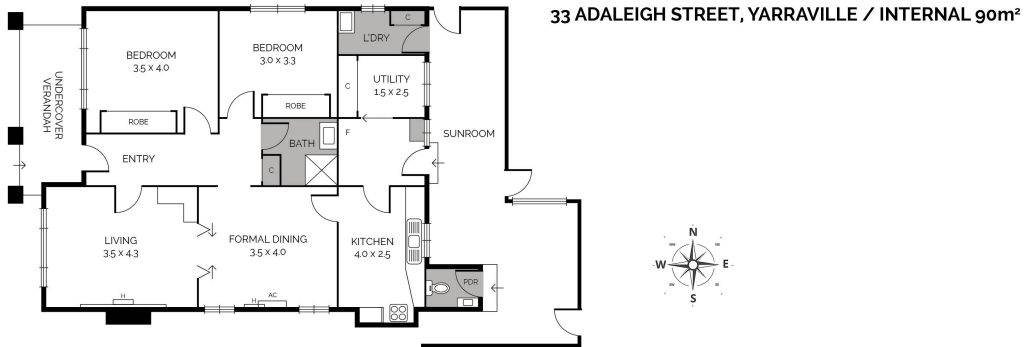
Principal - Ingrid Ward Property

M: 0448 300 764

E: ingrid.ward@smileelite.com

Auction

24th Nov 2022 6:30PM



Scale in metres. Dimensions are approximate. All information contained herein is gathered from sources we believe to be reliable, however we cannot guarantee its accuracy and interested persons should rely on their own enquiries.

Scale in metres. Dimensions are approximate. All information contained herein is gathered from sources we believe to be reliable, however we cannot guarantee its accuracy and interested persons should rely on their own enquiries.