



39 Newport Drive, Dudley Park FOR SALE



Invest or nest! Ready to move in! Great 4 x 2 family home

Ready to move in and enjoy an immaculate family home close to Mandurah Catholic College, canals, estuary, and Mandurah CBD.

This home was built in 2005 and is on a 414sqm block, it's ready for you to move in! The flowing design features a spacious open family, dining, and kitchen floor plan. This main area is fitted with a split-system heating and cooling air-conditioning unit to ensure year-round comfort.

The master bedroom is large in size and comprises an ensuite, boasting single vanity, a single shower with glass screens and a toilet plus a large built-in robe.

The three minor bedrooms are all double in size with built-in robes. All bedrooms share the family bathroom and a separate water closet.

Outside offers a paved patio area with little maintenance! There is also a double garage!

Features

- Built-In Robes
- 1 Ensuite
- 1 Living Area
- 1 Open Spaces For Vehicle
- Air Conditioning

Land size

414.00 Sqm



Denise Lewis

Principal - Lewis Holloway Property

M: 0412 877 613

E: denise.lewis@smileelite.com



Jan Holloway

Principal - Lewis Holloway Property

M: 0499 955 442

E: jan.holloway@smileelite.com



Denise Lewis

Principal - Lewis Holloway Property

M: 0412 877 613

E: denise.lewis@smileelite.com



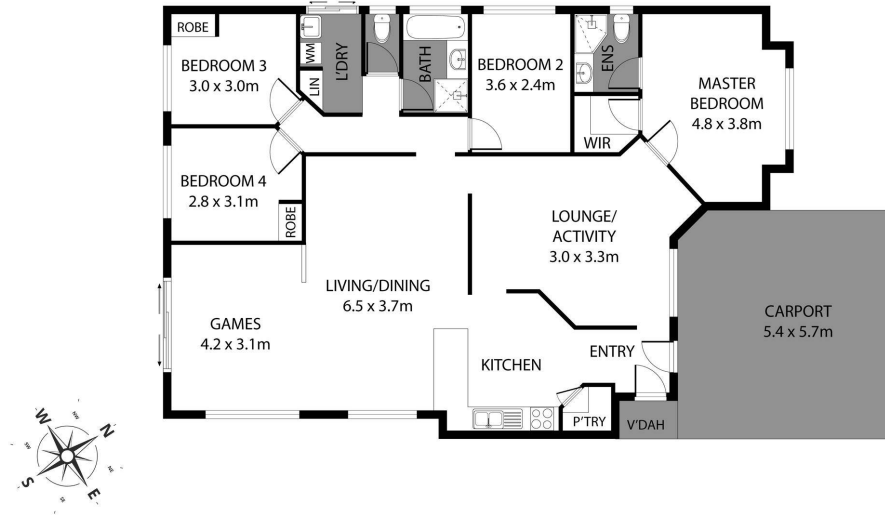
Jan Holloway

Principal - Lewis Holloway Property

M: 0499 955 442

E: jan.holloway@smileelite.com

39 Newport Drive, Dudley Park



Scale in metres. Dimensions are approximate. All information contained herein is gathered from sources we believe to be reliable, however we cannot guarantee its accuracy and interested persons should rely on their own enquiries.

Scale in metres. Dimensions are approximate. All information contained herein is gathered from sources we believe to be reliable, however we cannot guarantee its accuracy and interested persons should rely on their own enquiries.