



111 Jacobs Drive, Sussex Inlet FOR SALE



All reasonable offers considered & encouraged!

Here is a fantastic opportunity to secure a property which boasts a northerly aspect over Sussex Inlet. The perfect location for a holiday home which you can retreat to whenever your heart desires!

The building line at the front of the property allows for the addition of a substantial shed or simply to extend the home.

Walking distance to cafés and shops of Sussex Inlet and a short drive to catch a whale cruise in Huskisson or pop into Milton Ulladulla to explore the eateries and eclectic variety of shopping experiences.

Features include:

- Very desirable waterfront reserve location with potential
- Currently four-bedrooms, two-bathrooms with multiple living areas
- Open plan kitchen, dining flows to north facing entertaining with water views
- Master bedroom with attached office and sliders to deck and water views
- Semi self-contained living downstairs, perfect for extended family
- 10.5KW Solar electricity and hot water, ample storage throughout
- Views over Sussex Inlet waterway and public reserve
- Two carports plus small car secure garage and workshop
- 556sqm block with R2 Zoning
- Prized location for living or as a retreat

This is a great opportunity to acquire a property along this north facing strip.

Features

Solar Hot Water
Solar Panels
2 Toilets
Built-In Robes
Dishwasher
3 Living Areas
NBN Available
Balcony



Trish Broome

Principal - Trish Broome Property

M: 0447 661 388

E: trish.broome@smileelite.com

3 Open Spaces For Vehicles
Remote Garage Door
Secure Parking
Air Conditioning
Reverse Cycle A/C

Land size

556.00 Sqm



Trish Broome

Principal - Trish Broome Property

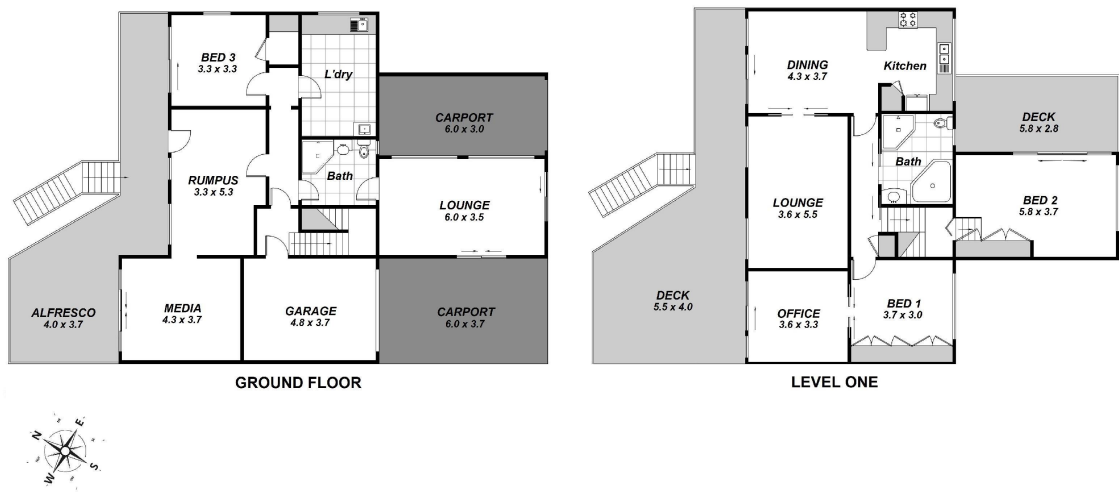
M: 0447 661 388

E: trish.broome@smileelite.com

TRISH BROOME

PROPERTY

111 JACOBS DRIVE, SUSSEX INLET / TOTAL 237.06 m²



Scale in metres. Dimensions are approximate. All information contained herein is gathered from sources we believe to be reliable, however we cannot guarantee its accuracy and interested persons should rely on their own enquiries.

POWERED BY **SMILE ELITE™**
PROUD PARTNERS WITH SYDNEY COUNTRY LIVING

Scale in metres. Dimensions are approximate. All information contained herein is gathered from sources we believe to be reliable, however we cannot guarantee its accuracy and interested persons should rely on their own enquiries.