



14 Wyrallah Road, East Lismore
FOR SALE

Motivated Vendors - Must be sold

The vendors of this fabulous home are eager for retirement living and are motivated to sell!! This lovely character home is centrally located to Lismore Base Hospital & St Vincent's Private Hospital, and will make the ideal investment or similarly be the perfect family home. The property is in close proximity to the Lismore CBD, Wyrallah Road Shopping Precinct, schools & sporting fields. There is fantastic vehicle storage at the back with double lockup garage, caravan storage plus trailer storage. The home features high ornate ceilings, hardwood floors – currently hidden beneath carpet, two living areas, internal access to a great rumpus area which has a beaut brick bar and second toilet & shower. This opens onto the covered barbecue area and out to the backyard.

Features

2 Toilets
Built-In Robes
2 Living Areas
1 Carport
Air Conditioning

Land size

972.00 Sqm

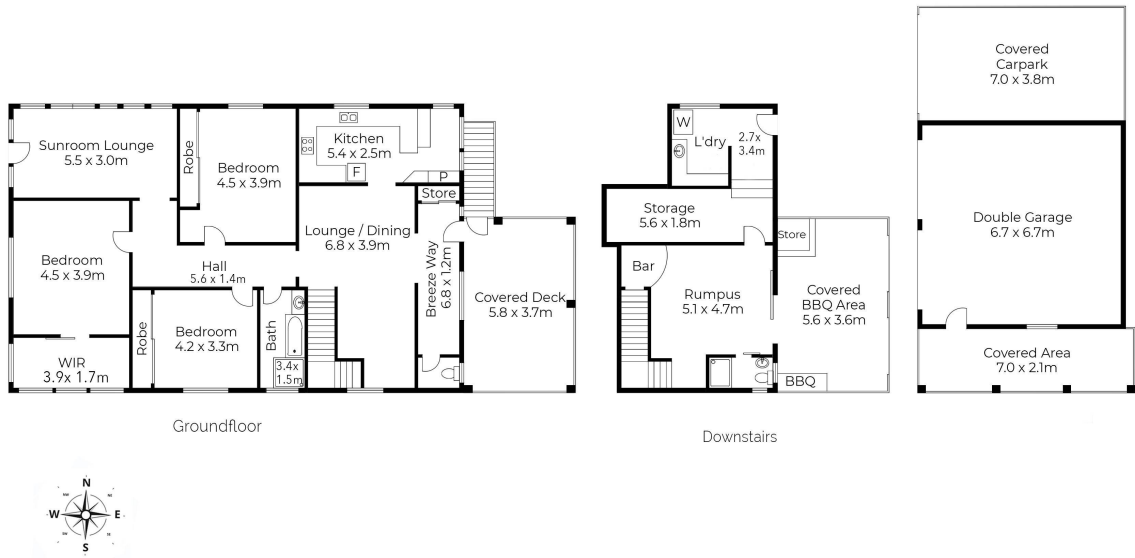


Lyn Youngberry
Principal - Lyn Youngberry Property
M: 0411 507 209
E: lyn.youngberry@smileelite.com



Lyn Youngberry
Principal - Lyn Youngberry Property
M: 0411 507 209
E: lyn.youngberry@smileelite.com

14 Wyrallah Road, East Lismore.



Scale in metres. Dimensions are approximate. All information contained herein is gathered from sources we believe to be reliable, however we cannot guarantee its accuracy and interested persons should rely on their own enquiries.