



746 Mount Fairy Road, Mount Fairy
FOR SALE



Country living and a spacious designer home!

This stunning property is sure to impress. The contemporary industrial look house design was modelled on a woolshed by Architect Andrew Verri. It offers an open plan living area surrounded by floor-to-ceiling windows for plenty of natural light, solar passive benefits and stunning outlooks. There is a large rumpus room with in-wall speakers, and a formal dining room that all have access to the north facing entertainment deck.

The kitchen features a generous size island bench, lots of storage, fuel stove/oven with wetback for floor heating, Highland four burner gas cooktop plus a large under bench Highland electric oven.

All rooms are large. There are three bedrooms, all with walk-in robes and the master has an ensuite. The study could be used as a fourth bedroom.

Downstairs is a large workshop area, bathroom, lots of storage areas and a double garage with automatic tilt door.

Features

4 Toilets
Built-In Robes
1 Ensuite
2 Living Areas

Land size

9.49 Ha



Kate Murphy
Principal - Kate Murphy Property
M: 0410 466 318
E: kate.murphy@smileelite.com

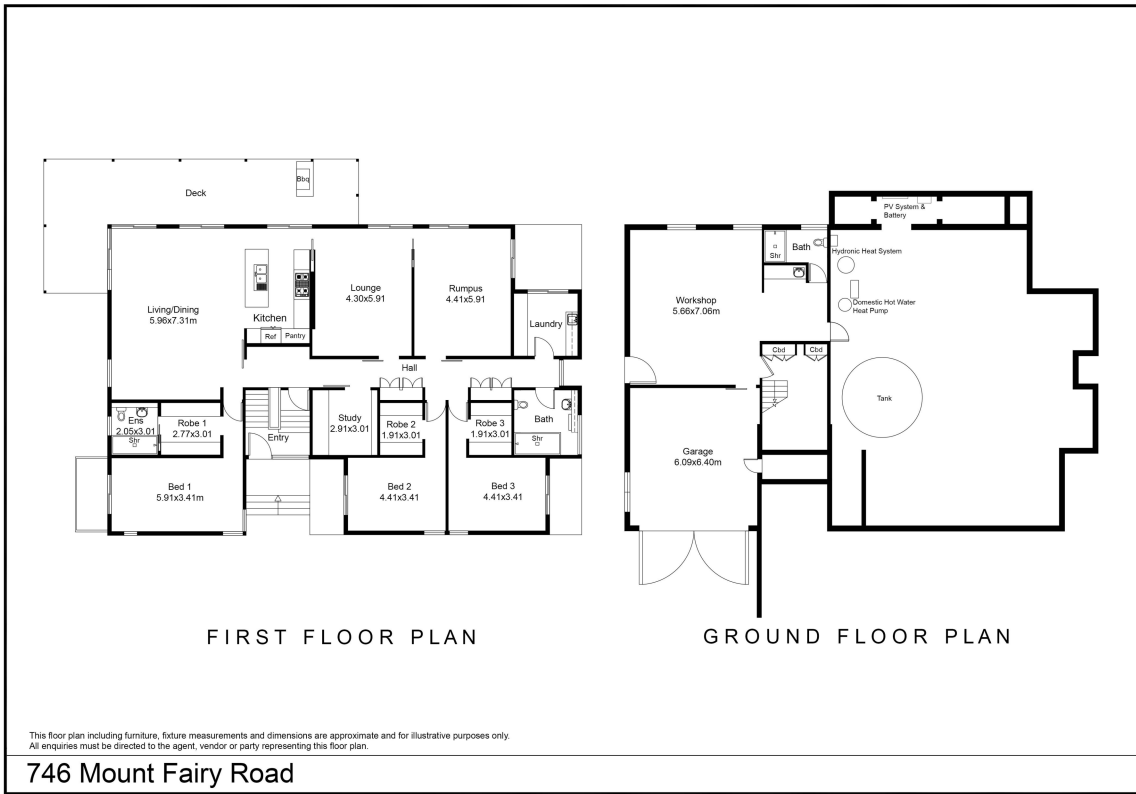


Kate Murphy

Principal - Kate Murphy Property

M: 0410 466 318

E: kate.murphy@smileelite.com



Scale in metres. Dimensions are approximate. All information contained herein is gathered from sources we believe to be reliable, however we cannot guarantee its accuracy and interested persons should rely on their own enquiries.