



17 Koolyanga Place, Greenfields FOR SALE



Invest or nest! Beautiful cottage! Big block, large powered shed and room for a pool!

This well presented, beautiful cottage has the most spectacular view over parkland and the wetlands of the Serpentine River.

A 1987 built home on an 891sqm block with oodles of space to park cars, caravans, boats. There is also drive-through side access, under the carport, to an expansive rear yard, well maintained gardens, lawn and raised flower bed plus a large, powered workshop and still plenty of room for a pool.

Step into this four-bed, one-bathroom home and experience the cosy cottage feel. The main living has high pitched ceilings, slate floor to the main thoroughfare and quality carpet to the lounge area. There would be nothing nicer than to snuggle in front of the television with a roaring wood burning fire before you during those cold winter months.

The stunning renovated kitchen overlooks the main living areas and out to the large patio area and to the gardens and lawn beyond!

Features

2 Toilets
4 Open Spaces For Vehicles
Air Conditioning

Land size

891.00 Sqm



Jan Holloway
Principal - Lewis Holloway Property
M: 0499 955 442
E: jan.holloway@smileelite.com



Denise Lewis
Principal - Lewis Holloway Property
M: 0412 877 613
E: denise.lewis@smileelite.com



Jan Holloway

Principal - Lewis Holloway Property

M: 0499 955 442

E: jan.holloway@smileelite.com

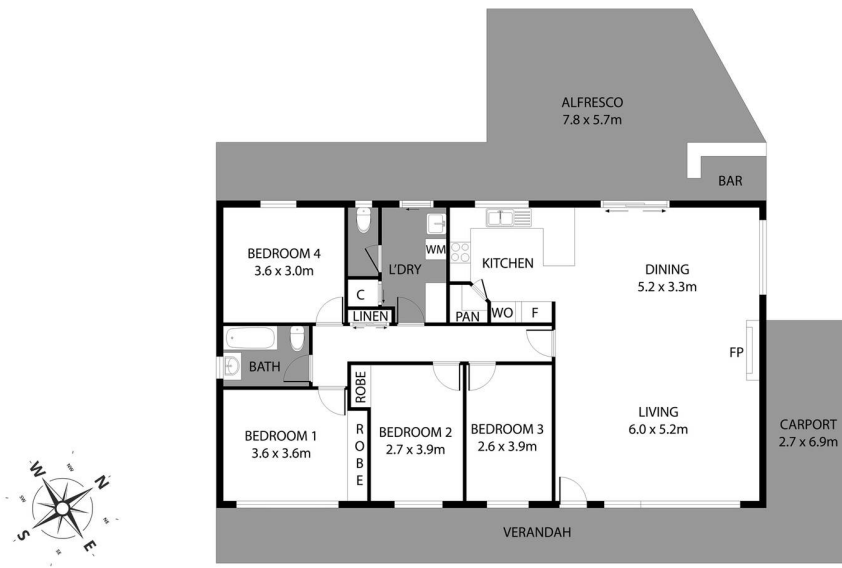


Denise Lewis

Principal - Lewis Holloway Property

M: 0412 877 613

E: denise.lewis@smileelite.com



Scale in metres. Dimensions are approximate. All information contained herein is gathered from sources we believe to be reliable, however we cannot guarantee its accuracy and interested persons should rely on their own enquiries.