

2202/80 A'Beckett Street, Melbourne FOR SALE



Lifestyle and location at MY 80

A tasteful and stylishly blend of interiors complements the graceful charm of this impressively sized, one bedroom apartment. City access is second to none, with the zone 1 tram merely steps away and Melbourne Central Station not much further.

Enjoy the cosmopolitan buzz of down town Melbourne . Close to RMIT and Melbourne University, Fed Squares, well as multiple dining and entertainment options. This apartment is an ideal addition to a savvy property portfolio or premium lifestyle option home in this most sought-after locale.

The apartment itself framed by floor-to-ceiling windows and quality carpets that you can discover the unique roomy comforts of the vast open-plan living and dining that also features a modern kitchen that comes complete with state of the art kitchen, ample storage space, stainless-steel appliances and sparkling splashback. While a luxuriously appointed bathroom with sophisticated marble look tiles takes the apartment to another level

The bedroom is larger than most around with generous robes, while a fully functional study nook adds an extra dimension to this single sensation.

Features

- 1 Toilet
- 1 Living Area



Mark Reuben
Principal - Mark Reuben Property
M: 0411 899 714
E: mark.reuben@smileelite.com

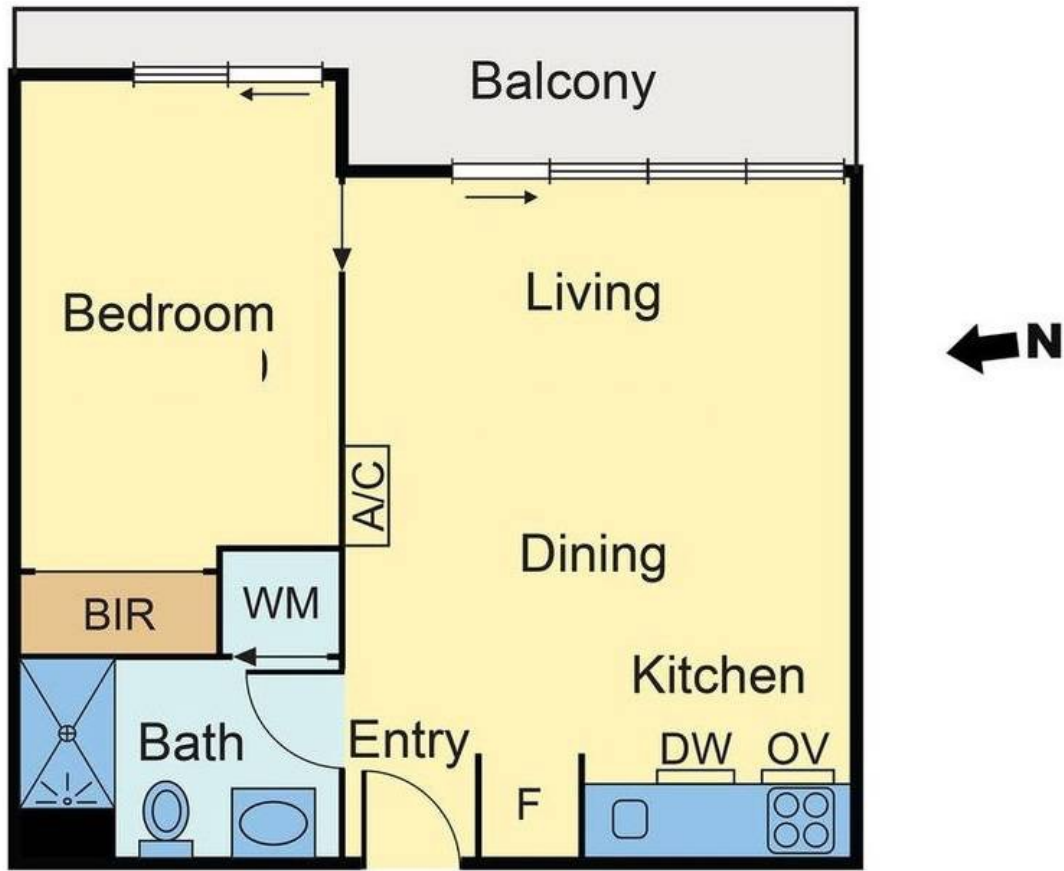


Mark Reuben

Principal - Mark Reuben Property

M: 0411 899 714

E: mark.reuben@smileelite.com



Floor Plan

Scale in metres. Dimensions are approximate. All information contained herein is gathered from sources we believe to be reliable, however we cannot guarantee its accuracy and interested persons should rely on their own enquiries.