



## 67 Talleyrand Circuit, Greta FOR SALE



### Big block living at its very finest!

Built in 2020 and sitting high up on Talleyrand Circuit in Greta, this meticulously finished Metricon built home is a truly exceptional property that ticks all the boxes.

Sitting on an unusually flat 1200sqm block, this home features the 'Grand View' design, with an upgraded 'Yale' facade consisting of a Colorbond roof along with brick and weatherboard cladding, creating a sensational street appeal.

As you enter the home you are greeted with enticing light wood effect flooring throughout the living areas and plantation shutters furnishing each window. Your gaze is drawn towards the bi-fold doors that frame the dining space, opening out onto a large timber deck and beyond.

At the front of the house, there are three substantially sized bedrooms all with carpeted floors, built-in wardrobes, plantation shutters and ducted air-conditioning. The beautifully designed main bathroom sits between them, with a freestanding bathtub and a frameless glass shower screen with a luxurious rain shower head complimented by elegant black tapware that suits perfectly.

### Features

- 2 Toilets
- Built-In Robes
- 1 Ensuite
- Air Conditioning

### Land size

1,200.00 Sqm



**Zoe Robertson**  
Principal - Zoe Robertson Property  
M: 0434 520 423  
E: [zoe.robertson@smileelite.com](mailto:zoe.robertson@smileelite.com)

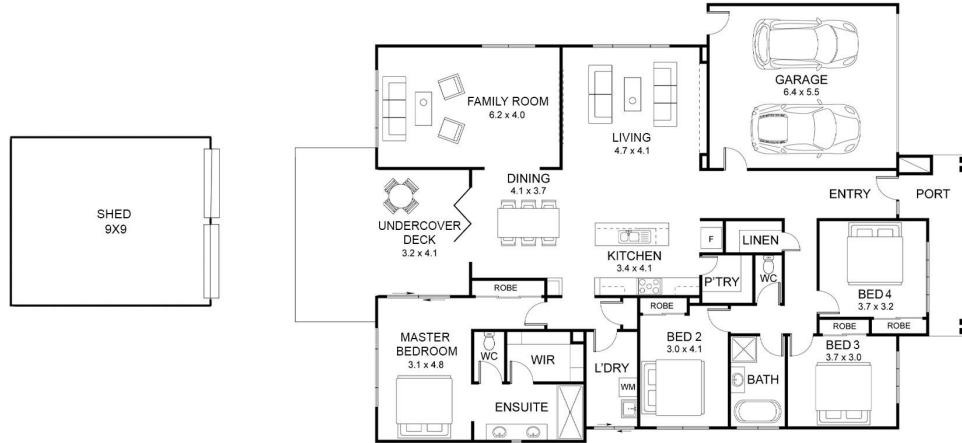


**Zoe Robertson**

Principal - Zoe Robertson Property

**M:** 0434 520 423

**E:** [zoe.robertson@smileelite.com](mailto:zoe.robertson@smileelite.com)



Scale in metres. Dimensions are approximate. All information contained herein is gathered from sources we believe to be reliable, however we cannot guarantee its accuracy and interested persons should rely on their own enquiries.