



## 6 Station Street, Schofields AUCTION

### SOLD PRIOR TO AUCTION

Presenting a location that is second to none, this home is conveniently located within a 2-minute walk to Schofield's Public School and within a short walking distance to local parks, shops, Schofields Train Station, as well as the Schofields Shopping Centre this home presents ultimate convenience for the family.

The home presents beautifully, has been very well looked after by the current owners, and is sun-drenched throughout the whole day due to its ideal corner position and northwest-facing aspect. It has been upgraded with timber flooring, fresh paint, and upgraded light fittings. The functional floor plan opens beautifully into the outdoor garden area, perfect for your children to play in.

Option 1: Live comfortably and enjoy everything the existing home has to offer and capitalise on future growth in Schofields

Option 2: Build your dream home with a swimming pool or granny flat (S.T.C.A)

Option 3: Build duplexes (S.T.C.A)

Additional features you will love:

- Beautifully manicured and well-maintained front and backyard landscaping
- Land size 601 sqm approx.

### Features



**Amit Kumar**

Principal - Amit Kumar Property

**M:** 0422 256 468

**E:** amit.kumar@smileelite.com



**Siya Sachdeva**

Associate - Amit Kumar Property

**M:** 0473 955 832

**E:** siya.sachdeva@smileelite.com

**Auction**

26th Mar 2023 11:00AM



**Amit Kumar**

Principal - Amit Kumar Property

**M:** 0422 256 468

**E:** amit.kumar@smileelite.com



**Siya Sachdeva**

Associate - Amit Kumar Property

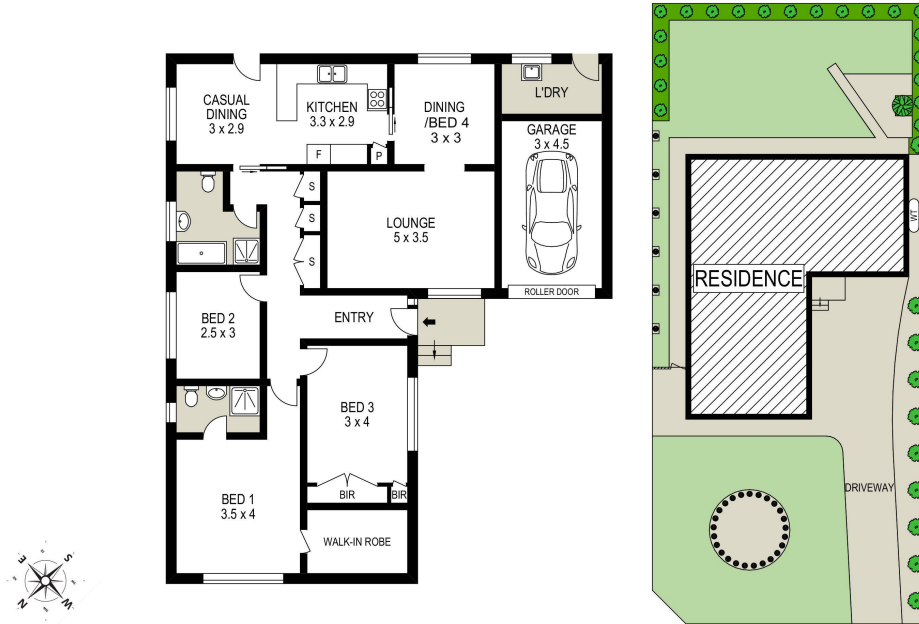
**M:** 0473 955 832

**E:** siya.sachdeva@smileelite.com

**Auction**

26th Mar 2023 11:00AM

6 STATION STREET, SCHOFIELDS



Disclaimer: Floor plans and site plans are intended as a guide only. They are not part of any legal document or title and are subject to errors, omission, and inaccuracies and should not be used as reference. Sizes and dimensions are approximate only. Interested parties should make their own enquiries. **Floor plan by: MEAIN Real Estate Marketing Media**

Scale in metres. Dimensions are approximate. All information contained herein is gathered from sources we believe to be reliable, however we cannot guarantee its accuracy and interested persons should rely on their own enquiries.