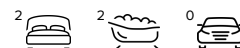


Level 14/1412/639 Lonsdale Street, Melbourne FOR SALE



Lifestyle and location with a spectacular bay view from a corner position

Across the road from Southern Cross Station, the airport shuttle and adjacent to the new 7-star Ritz Carlton Hotel. This is the most sought after address in the CBD!

This Apartment boasts spectacular, uninterrupted views of Docklands Harbour and the city, never to be built out, making this apartment of exceptional value.

Generously sized with spectacular features:

- Corner apartment with a wrap-around balcony
- Two bedrooms, main with ensuite
- Second bedroom has private north facing balcony
- Two bathrooms

NOTE: Option to purchase without car or with 1 car park or with 2 car parks

- Without car park- \$530,000 - \$570,000
- With 1 car space - \$600,000- \$620,000
- With 2 car spaces - \$660,000- \$670,000

Do not miss out on this spectacular two bedroom, two bathroom luxury-designer, ultra-stylish corner apartment, boasting a north-west aspect and within the sought after Madison building in the 'Upper West Side Towers'.

Features

2 Toilets
Built-In Robes
Air Conditioning

Land size

80.00 Sqm



Mark Reuben

Principal - Mark Reuben Property

M: 0411 899 714

E: mark.reuben@smileelite.com

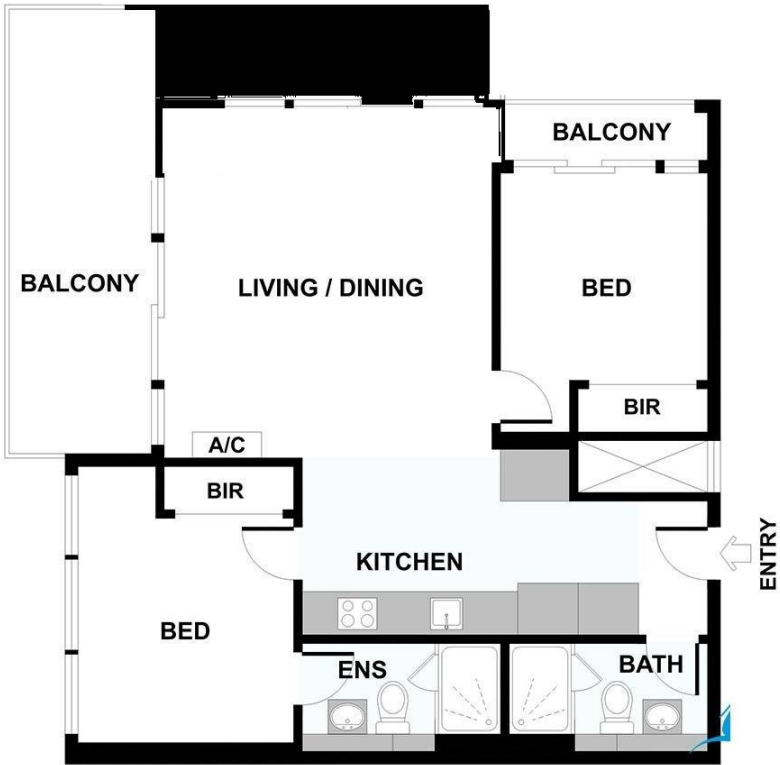


Mark Reuben

Principal - Mark Reuben Property

M: 0411 899 714

E: mark.reuben@smileelite.com



Scale in metres. Dimensions are approximate. All information contained herein is gathered from sources we believe to be reliable, however we cannot guarantee its accuracy and interested persons should rely on their own enquiries.