



20 Melbee Street, Rutherford
FOR SALE



Spacious three-bedroom home with original features and a fabulous backyard!

Welcome home, all the hard work has been done, you just need to move in.

This charming and deceivingly spacious three-bedroom, one-bathroom, original weatherboard house was built in the 1950's and offers a warm and inviting atmosphere with original timber hardwood floors and high ceilings with ornate cornices.

The house features sash windows to the front and side of the property and large sliding windows to the rear, providing plenty of natural light.

As you enter the large lounge area, you'll notice the decorative wainscoting that adds to the character of this home.

This leads into an impressive custom-built open-plan kitchen, dining area with Granite benchtops, a large island bench/breakfast bar and a great view out to the landscaped backyard.

The kitchen comes equipped with a Westinghouse electric cooktop and oven, and there is plenty of storage space including a built-in pantry.

Features

1 Toilet
Built-In Robes
1 Living Area
3 Open Spaces For Vehicles
Air Conditioning

Land size

567.00 Sqm



Zoe Robertson

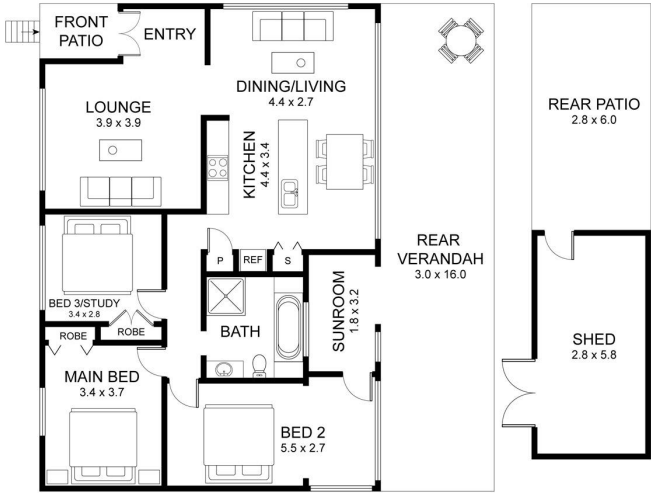
Principal - Zoe Robertson Property

M: 0434 520 423

E: zoe.robertson@smileelite.com



Zoe Robertson
Principal - Zoe Robertson Property
M: 0434 520 423
E: zoe.robertson@smileelite.com



Scale in metres. Dimensions are approximate. All information contained herein is gathered from sources we believe to be reliable, however we cannot guarantee its accuracy and interested persons should rely on their own enquiries.