



1/1 Kerrabee Court, Goonellabah
FOR SALE

New price - great investment

The owners of this spacious three-bedroom duplex are motivated to move it on and have priced it to sell. Situated on a level allotment in a quiet cul-de-sac in Goonellabah, the home features a large lounge room with open-plan kitchen and dining rooms. Plantation shutters adorn the windows and doors in the living area and an air-conditioner has been fitted for year round comfort. The living area opens onto the north facing timber deck, which steps down to the small, low-maintenance back garden. A single lock-up garage with a remote controlled door will house your car and offer internal access to the unit.

This property is in close proximity to shops and schools and is suitable for investors, first home buyers, retirees and young families.

Features

- 1 Toilet
- Built-In Robes
- 1 Living Area
- Air Conditioning



Lyn Youngberry
Principal - Lyn Youngberry Property
M: 0411 507 209
E: lyn.youngberry@smileelite.com



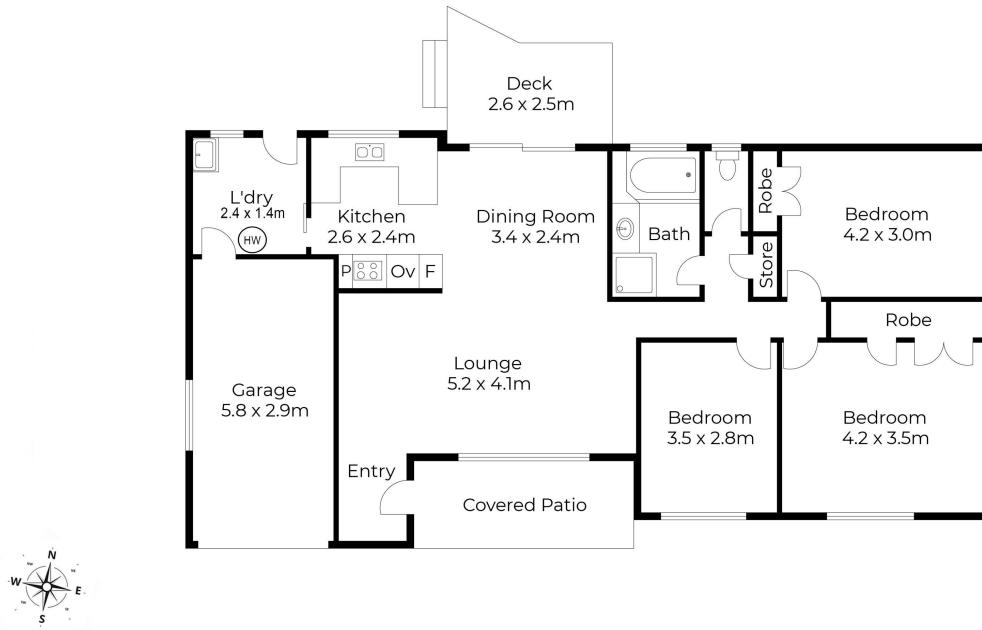
Lyn Youngberry

Principal - Lyn Youngberry Property

M: 0411 507 209

E: lyn.youngberry@smileelite.com

1/1 Kerrabee Court, Goonellabah.



Scale in metres. Dimensions are approximate. All information contained herein is gathered from sources we believe to be reliable, however we cannot guarantee its accuracy and interested persons should rely on their own enquiries.

POWERED BY SMILE ELITE™
PROUD PARTNERS WITH SYDNEY COUNTRY LIVING

Scale in metres. Dimensions are approximate. All information contained herein is gathered from sources we believe to be reliable, however we cannot guarantee its accuracy and interested persons should rely on their own enquiries.