



23 Brahma Road, Box Hill FOR SALE



North-facing family home in a highly sought after location

With a location that is second to none and complete with the highest quality inclusions, this home is one that will impress the whole family and is one you need to see.

Boasting an ideal north-facing aspect, this home is sun-drenched throughout the whole day and is the most ideal home for those that love to entertain, with a seamless blend of indoor and outdoor entertaining areas. Featuring a spacious, open-plan kitchen that overlooks the extensive living and dining area. The modern kitchen features stone benchtops, central island with breakfast bar, soft-close drawers and doors, 900mm stainless-steel appliances, tiled splashback, dishwasher, pantry cupboard and high quality SMEG appliances.

Features

- Alarm System
- Built-In Robes
- 1 Ensuite
- Air Conditioning

Land size

375.00 Sqm



Amit Kumar

Principal - Amit Kumar Property

M: 0422 256 468

E: amit.kumar@smileelite.com



Bradley Ronayne

Principal - Bradley Ronayne Property

M: 0414 451 922

E: bradley.ronayne@smileelite.com



Amit Kumar

Principal - Amit Kumar Property

M: 0422 256 468

E: amit.kumar@smileelite.com

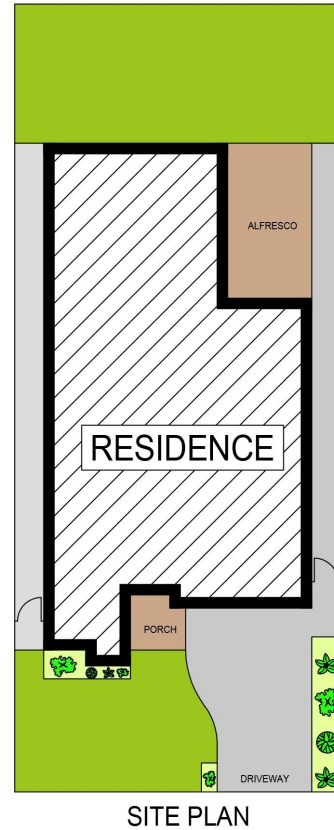
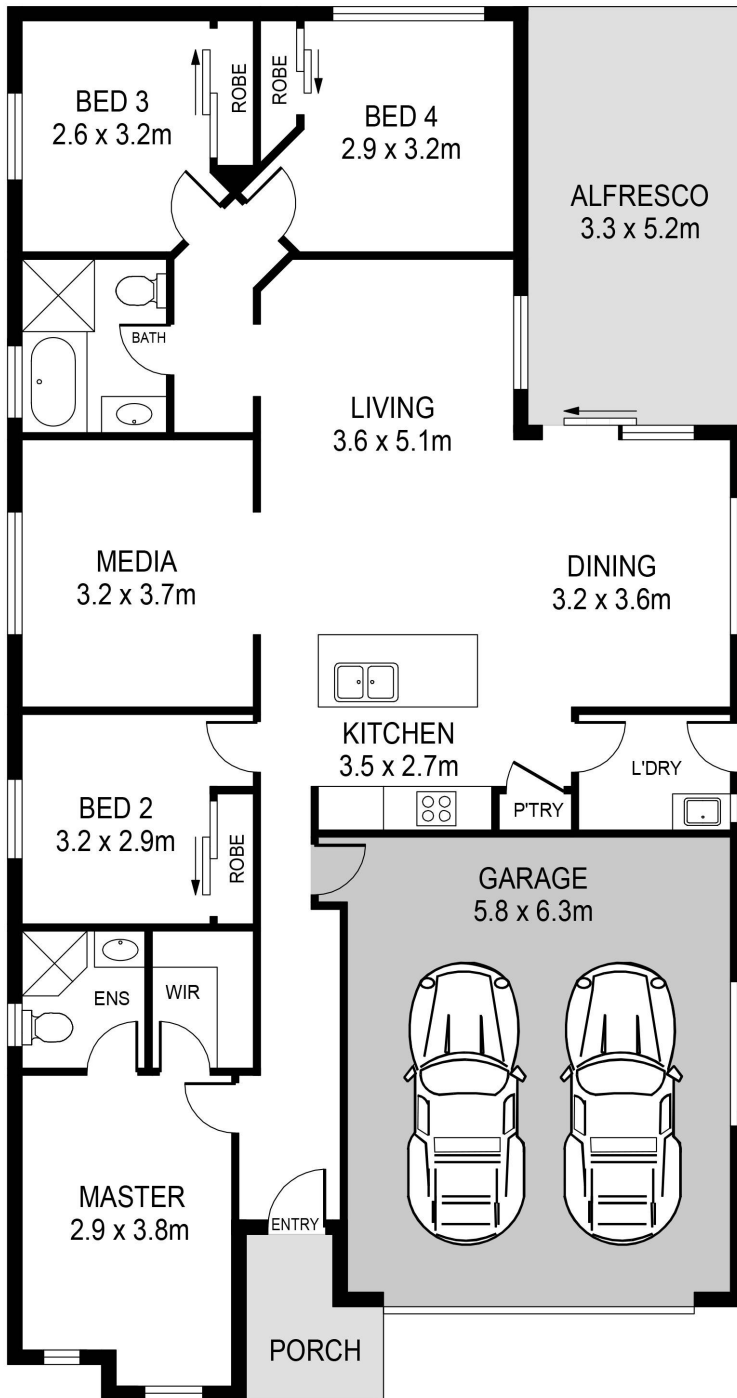


Bradley Ronayne

Principal - Bradley Ronayne Property

M: 0414 451 922

E: bradley.ronayne@smileelite.com



23 BRAHMAN ROAD, BOX HILL

DISCLAIMER:

PLANS SHOWN ARE FOR MARKETING PURPOSES ONLY. ALL DIMENSIONS ARE APPROXIMATE AND NOT TO SCALE. THEY ARE SUBJECT TO ERRORS AND INACCURACIES AND NO LIABILITY WILL BE ACCEPTED. INTERESTED PARTIES SHOULD MAKE THEIR OWN INQUIRIES.

Scale in metres. Dimensions are approximate. All information contained herein is gathered from sources we believe to be reliable, however we cannot guarantee its accuracy and interested persons should rely on their own enquiries.