



1604/280 Spencer Street, Melbourne
FOR SALE



Experience luxury and ultra-convenience inner city living

Experience luxury, ultra-convenience and low-maintenance inner city living from this astutely appointed, modern apartment with a "Spencer Street" address.

Flooded with natural light, the spacious open plan layout incorporates kitchen, dining and living areas, enhanced by golden blonde timber flooring and floor-to-ceiling double-glazed windows that extend onto an undercover balcony. Quality stainless-steel appliances, stone counters and two tone cabinetry complement a streamline kitchen.

Sparkling bathroom, built-in wardrobes, reverse cycle air-conditioner and heating, lift and visual intercom, and European laundry. Residents of this tower enjoy the benefits of access to resort style recreational facilities including a gym, heated indoor pool that is on the top floor to capture the beautiful city scrapers.

Perfectly located near Spencer Outlet Shopping, great local cafes, restaurants, and supermarkets, Docklands precinct, the apartment is a short tram ride to RMIT, Melbourne University and all CBD colleges, moments from legal precinct, Marvel Stadium, Queen Victoria Market and Flagstaff Gardens.

Features

- 1 Toilet
- 1 Living Area



Mark Reuben
Principal - Mark Reuben Property
M: 0411 899 714
E: mark.reuben@smileelite.com



Mark Reuben

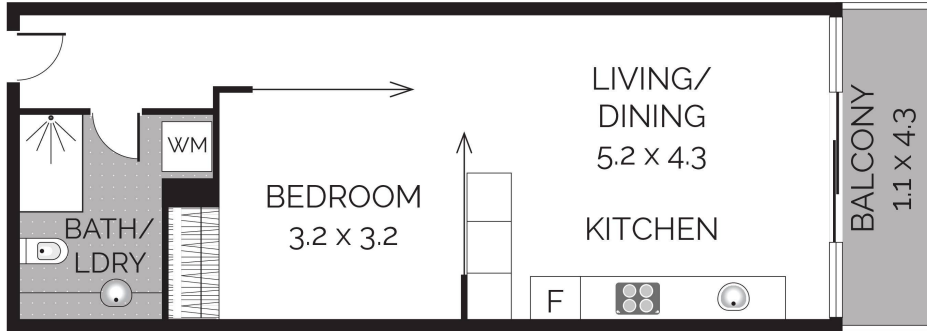
Principal - Mark Reuben Property

M: 0411 899 714

E: mark.reuben@smileelite.com

MARK REUBEN
PROPERTY

1604/280 SPENCER STREET, MELBOURNE/TOTAL 48 M²



Scale in metres. Dimensions are approximate. All information contained herein is gathered from sources we believe to be reliable, however we cannot guarantee its accuracy and interested persons should rely on their own enquiries.

POWERED BY SMILE ELITE™
PROUD PARTNERS WITH SYDNEY COUNTRY LIVING

Scale in metres. Dimensions are approximate. All information contained herein is gathered from sources we believe to be reliable, however we cannot guarantee its accuracy and interested persons should rely on their own enquiries.