



24 Barton Drive, Kiama Downs FOR SALE



First home buyers, investors, downsizers and developers

Nestled in a tightly held coastal suburb, this home boasts a convenient lifestyle with an abundance of amenities at your doorstep. Situated in a family-friendly street is this single-level three-bedroom home which will please the most discerning of buyers.

If you are looking for a single-level, neat-as-a-pin home, in a quiet, peaceful location, you will go a long way to find a better alternative. This house is bound to attract a lot of attention. If you are after a relaxed coastal lifestyle you'll love what this home has to offer, in a sought-after location with close proximity to neighbourhood shops, sporting fields, public transport and the stunning beaches which define the picturesque South Coast.

The home is set on an expansive 754 sqm parcel of land that is perfect for children, pets or gardening enthusiasts. The large covered sunroom at the rear of the home provides the perfect space for entertaining, kids to play and as a second living option.

Features

Land size
754.00 Sqm



Monique Field
Principal - Monique Field Property
M: 0403 021 172
E: monique.field@smileelite.com

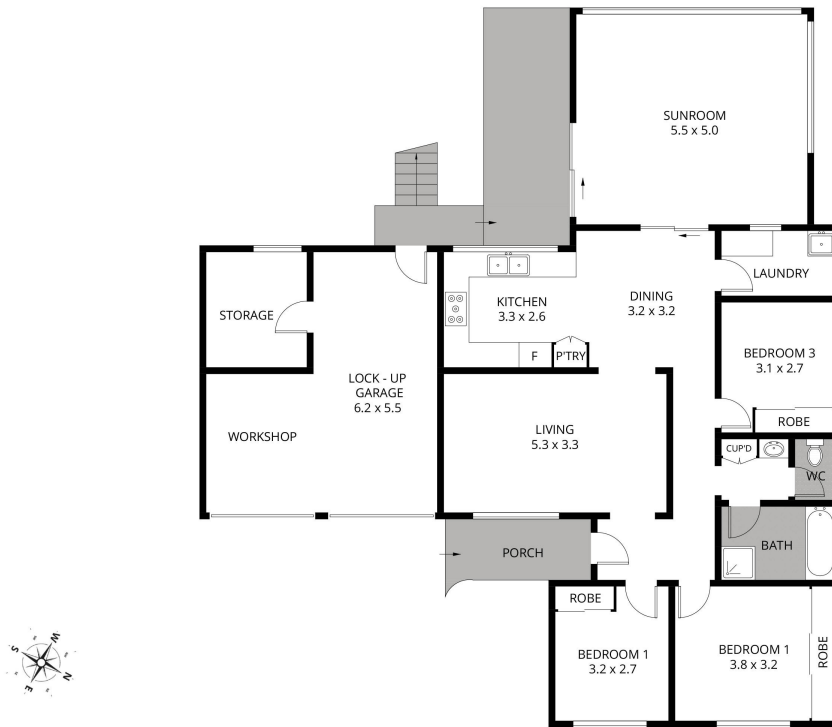


Monique Field

Principal - Monique Field Property

M: 0403 021 172

E: monique.field@smileelite.com



Scale in metres. Dimensions are approximate. All information contained herein is gathered from sources we believe to be reliable, however we cannot guarantee its accuracy and interested persons should rely on their own enquiries.