



1/17 Pineview Drive, Goonellabah
FOR SALE

Family size duplex

This delightful duplex has been lovingly maintained and is a pleasure to inspect.

The home features three bedrooms, an open-plan lounge, a dining and kitchen with a great covered back deck that opens off the dining room.

The kitchen has great cupboard and bench space and there's an internal laundry.

The property is located in close proximity to schools, playing fields, shops and Kadina Park and would suit anyone looking for a low-maintenance home.

There are solar panels to reduce your electricity costs, a single lock-up garage and low-maintenance gardens.

All the hard work has been done - there is nothing to do but move in and relax.

Disclaimer: All information contained herein is obtained from property owners or third-party sources which we believe are reliable. We have no reason to doubt its accuracy, however we cannot guarantee it. All interested person/s should rely on their own enquiries.

Features

1 Toilet
Built-In Robes
1 Living Area
Air Conditioning



Lyn Youngberry
Principal - Lyn Youngberry Property
M: 0411 507 209
E: lyn.youngberry@smileelite.com



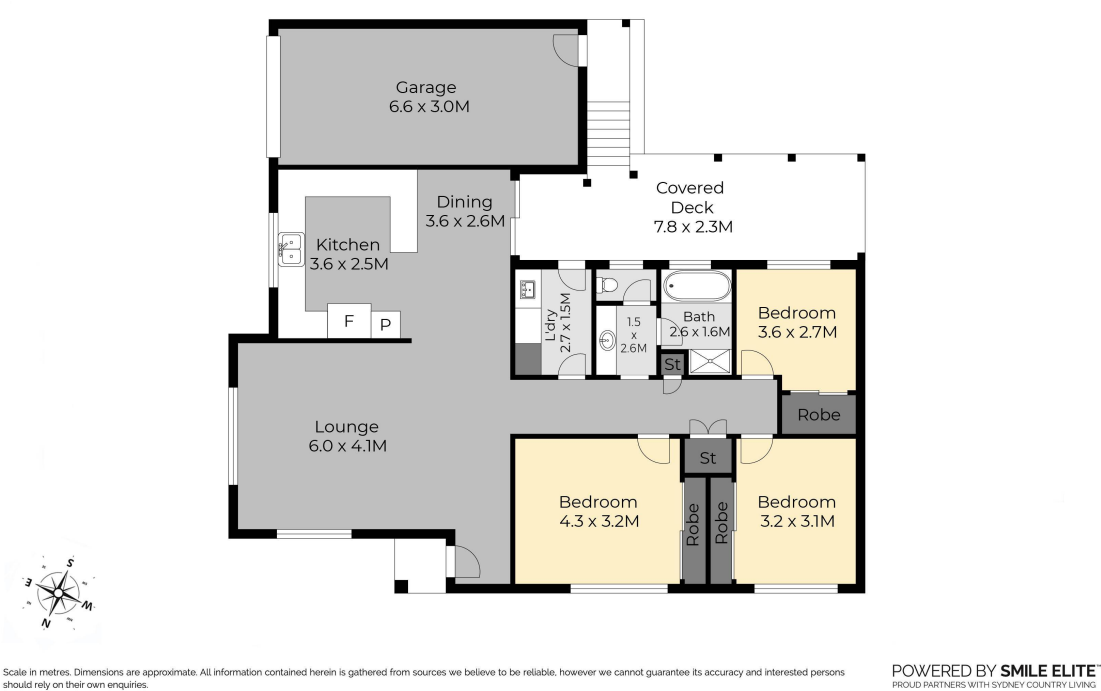
Lyn Youngberry

Principal - Lyn Youngberry Property

M: 0411 507 209

E: lyn.youngberry@smileelite.com

Unit 1, 17 Pineview Drive, Goonellabah



Scale in metres. Dimensions are approximate. All information contained herein is gathered from sources we believe to be reliable, however we cannot guarantee its accuracy and interested persons should rely on their own enquiries.