



### 37 Richards Close, Berowra FOR SALE

#### Idyllic Family Retreat

A move-in ready haven of idyllic privacy, this family-oriented home offers a relaxed indoor/outdoor lifestyle on 693 sqm at the end of a quiet cul-de-sac. The elevated layout reveals a spacious living zone with a slow-combustion fireplace and a modern kitchen/dining area each flowing outside to a selection of alfresco settings amid leafy garden surroundings.

There are three bedrooms, two with built-ins and two with ensuites including the master which offers both, plus a lower-level studio or home office. Replete with inclusions, the home features air conditioning and ceiling fans throughout, polished floorboards, high ceilings, extensive storage space and a double lock-up garage.

Within walking distance of Berowra Station, cafes and Berowra Public School, this home is ideal for growing families. Its peaceful location offers easy access to bush trails in the national park, village shops, Berowra Waters and the M1 for a rapid Sydney commute.

#### Features

Built-In Robes  
1 Living Area



**Francesca Parrino**

Principal - Francesca Parrino Property

**M:** 0415 651 740

**E:** francesca.parrino@smileelite.com



**Julia Ferreira**

Sales Associate - Francesca Parrino  
Property

**M:** 0448 069 199

**E:** julia.ferreira@smileelite.com



**Francesca Parrino**

Principal - Francesca Parrino Property

**M:** 0415 651 740

**E:** francesca.parrino@smileelite.com

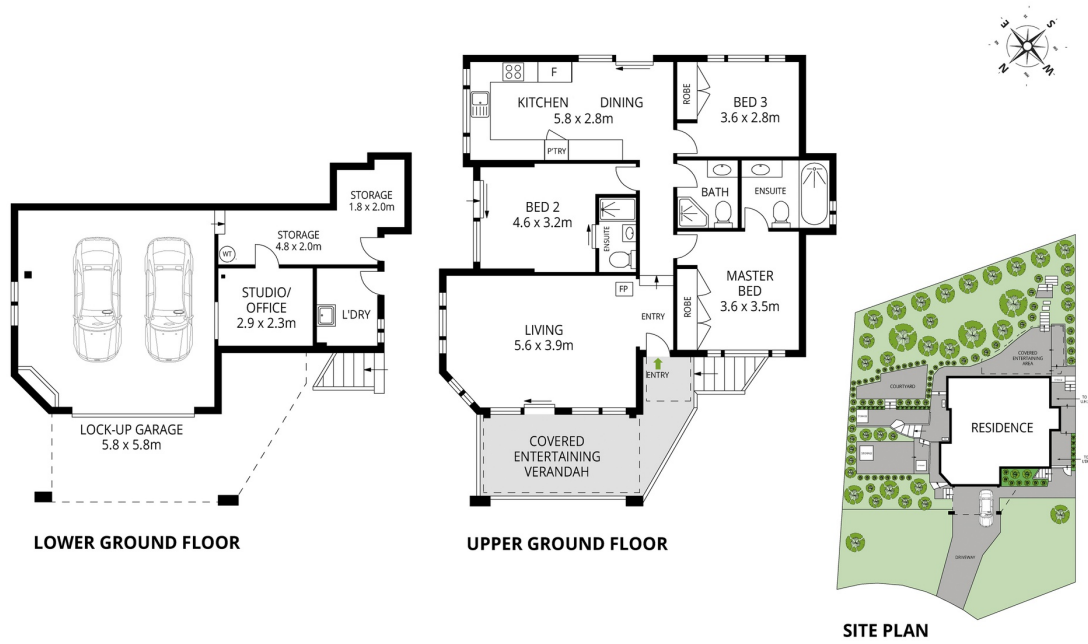


**Julia Ferreira**

Sales Associate - Francesca Parrino Property

**M:** 0448 069 199

**E:** julia.ferreira@smileelite.com



Scale in metres. Dimensions are approximate. All information contained herein is gathered from sources we believe to be reliable, however we cannot guarantee its accuracy and interested persons should rely on their own enquiries.