



## 21 Banks Drive, Shell Cove FOR SALE



### Built with families at the forefront

From the moment you step into this impeccably presented four-bedroom family home, you will be surprised at how deceiving it is in size, along with the long list of features on offer.

Defined by its generous proportions, this impressive residence provides a superb sanctuary for large-scale family living.

Busy family members need places to rest and relax in private, as much as they need places to enjoy themselves together. The home is designed for "together spaces" such as the open plan kitchen, living and dining that overlooks and transitions seamlessly to the private, undercover outdoor entertaining area.

The real magic is outside. Being able to keep a watchful eye on the kids as they play in the fully fenced and secure level backyard, whilst you can sit back and enjoy the serenity that so few locations can offer. The yard is low maintenance and has established native gardens.

### Features

- 3 Toilets
- 3 Living Areas
- 4 Open Spaces For Vehicles

### Land size

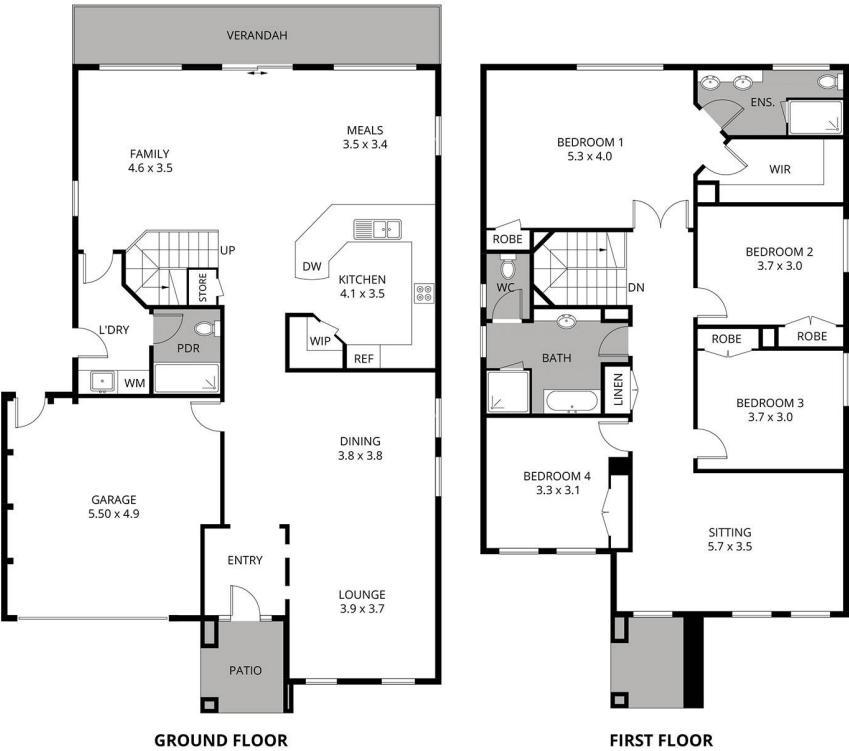
504.00 Sqm



**Monique Field**  
Principal - Monique Field Property  
M: 0403 021 172  
E: [monique.field@smileelite.com](mailto:monique.field@smileelite.com)



**Monique Field**  
Principal - Monique Field Property  
**M:** 0403 021 172  
**E:** [monique.field@smileelite.com](mailto:monique.field@smileelite.com)



Scale in metres. Dimensions are approximate. All information contained herein is gathered from sources we believe to be reliable, however we cannot guarantee its accuracy and interested persons should rely on their own enquiries.