



Level 17/1706/639 Lonsdale Street, Melbourne
FOR SALE



EXPRESSION OF INTEREST MUST SELL BEFORE 30/07 UNLESS SOLD PRIOR

OPTION TO PURCHASE WITH 1 or 2 CARPARKS

WITH 1 CARPARK- \$520,000 - \$570,000

WITH 2 CARPARKS- \$600,000- \$645,000

Do NOT miss out on this truly unique residence, that is rarely on the market. Perched within a corner position of the prestigious Upper West Side Madison Tower.

This apartment provides unparalleled luxury, with rich materials throughout. This exceptional home offers space in a supreme setting, ideal for both first home buyers or smart investors.

Boasting a triple exposure and spectacular views of the bay, it provides an abundance of natural light from the north, west and south aspect as well. This two-bedroom, two-bathroom, corner apartment with a secure car park, large balcony, has all the requirements a perfect city pad needs.

Setting new benchmarks in luxury, designer style and cutting edge technology, this breathtaking ultra-stylish two-bedroom, corner apartment boasting a north-west aspect, will suit any type of CBD dweller.

Features

2 Open Spaces For Vehicles



Mark Reuben

Principal - Mark Reuben Property

M: 0411 899 714

E: mark.reuben@smileelite.com

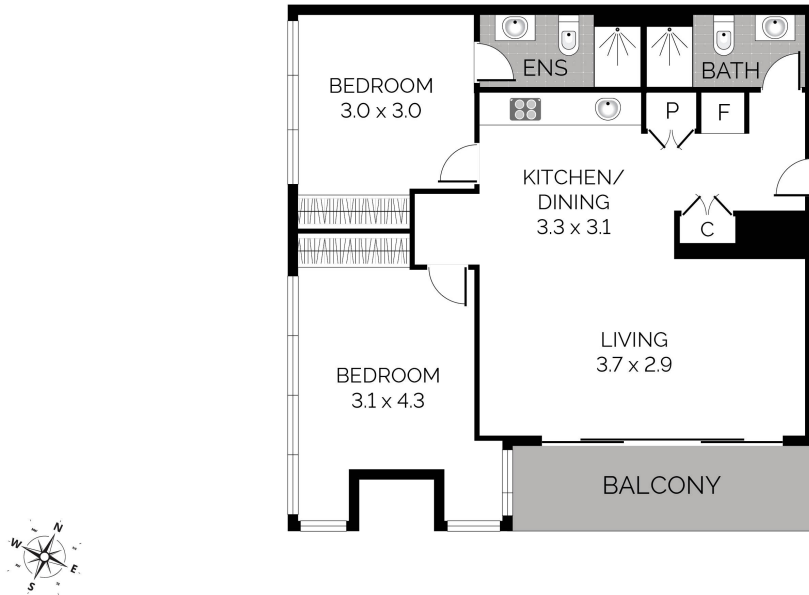


Mark Reuben

Principal - Mark Reuben Property

M: 0411 899 714

E: mark.reuben@smileelite.com



Scale in metres. Dimensions are approximate. All information contained herein is gathered from sources we believe to be reliable, however we cannot guarantee its accuracy and interested persons should rely on their own enquiries.