



1885 Araluen Road, Deua River Valley FOR SALE



Deua River Frontage Retreat

Have you thought about living off grid, perhaps you are after somewhere quiet and tranquil to re-set and improve your work and life balance? Want to start your own health retreat or some eco camping, summers filled with swimming and taking rides across the glorious landscape?

Well this is it, this beautiful 29-acre property is just 20 minutes from Moruya CBD but yet you feel miles away. Featuring approximately 1km of gorgeous riverfront with deep swimming holes and sandy river banks the kids and family will be able to relax and enjoy all year round.

This property has a DA approved stone cottage which has had a charming facelift creating a light-filled home perfect for family living. As you enter you are greeted with stunning French doors that are complemented with beautiful hardwood posts, local stone, skylights that allow sunlit rooms, a cosy open fireplace, a large open plan living with cathedral ceilings and a ground concrete floor that completes this character-filled home.

Three bedrooms all with new wool carpets, a large updated kitchen and stove, spacious bathroom and laundry offering room for all of the family. Including a new color bond roof with loads of insulation.

The property offers 29 acres with fertile soil where you can grow your own vegetables, fruit trees and run livestock. Totally off-grid with a huge 36kWh solar system with six lithium batteries all set up on the generous-sized machinery shed where you can store your tractors, cars, and farming equipment or use them as stables for the horses.

As soon as you start your drive into the property, there is a calm and serene feeling that overwhelms you. Set amongst the mountains, there are cleared paddocks, beautiful bush and a gorgeous river that wraps the property, there is truly no place like this.

If you are interested in an inspection please don't hesitate to give me a call.

- 40,000L water storage
- Septic system
- 36kwh Solar system with six lithium batteries
- River frontage
- 29-acres



Michelle Cottington

Principal - Michelle Cottington Property

M: 0413 552 519

E: michelle.cottington@smileelite.com

Disclaimer: All information contained herein is obtained from property owners or third-party sources which we believe are reliable. We have no reason to doubt its accuracy, however we cannot guarantee it. All interested person/s should rely on their own enquiries.

Features

Solar Panels
Water Tank
1 Toilet
ADSL Available
1 Living Area
Open Fireplace
Patio
Shed

Land size

29.00 Ac



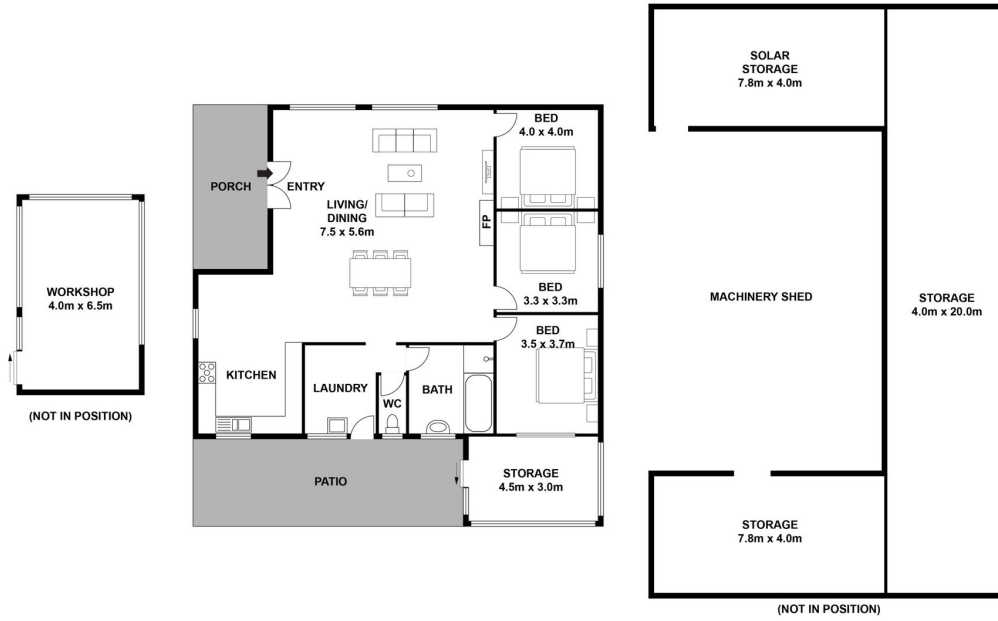
Michelle Cottington

Principal - Michelle Cottington Property

M: 0413 552 519

E: michelle.cottington@smileelite.com

1885 ARALUEN ROAD, DEUA RIVER VALLEY/ TOTAL 156m²



Scale in metres. Dimensions are approximate. All information contained herein is gathered from sources we believe to be reliable, however we cannot guarantee its accuracy and interested persons should rely on their own enquiries.

Powered by **SMILEELITE**

Scale in metres. Dimensions are approximate. All information contained herein is gathered from sources we believe to be reliable, however we cannot guarantee its accuracy and interested persons should rely on their own enquiries.