



48 Donnellys Ridge Rd, Moruya FOR SALE



Affordable acreage

This solid brick home on 5-acres, is conveniently located just 5-minutes from Moruya CBD.

The home features four-bedrooms, a master with a walk-in robe and an ensuite. There is a large double garage with two carports, including another that easily accounts for the boat and/or caravan.

The kitchen and lounge area is cosy with a wood fire, ducted heating/cooling and a beautiful outlook onto the acreage. The gorgeous sunroom is a perfect winter hideaway that allows you to relax and enjoy the winter sun.

The sunroom and deck have been enclosed with electric shutters which help protect from weather. This property has a workshop and storage under the house as well as ample room for a second dwelling or granny flat STCA.

This property is perfect for you to enjoy everything the region has to offer. Ideal location for horses, and kids to enjoy running around or simply enjoy the serenity. Quick drive to local beaches and clubs.

This home has many features but still has plenty of possibilities to make this your own piece of paradise, priced to sell, don't miss your opportunity.

Features:

- 1.8kw Solar
- Zoned RU4
- Solar powered gate
- 62,000L water storage

Features

- Grey Water System
- Solar Panels
- 2 Toilets
- Built-In Robes
- Dishwasher
- Ducted Vacuum System



Michelle Cottington

Principal - Michelle Cottington Property

M: 0413 552 519

E: michelle.cottington@smileelite.com

1 Ensuite
1 Living Area
NBN Available
Open Fireplace
Pay TV Access
Deck
Fully Fenced
Patio
Shed
Ducted Cooling
Ducted Heating

Land size

2.07 Ha



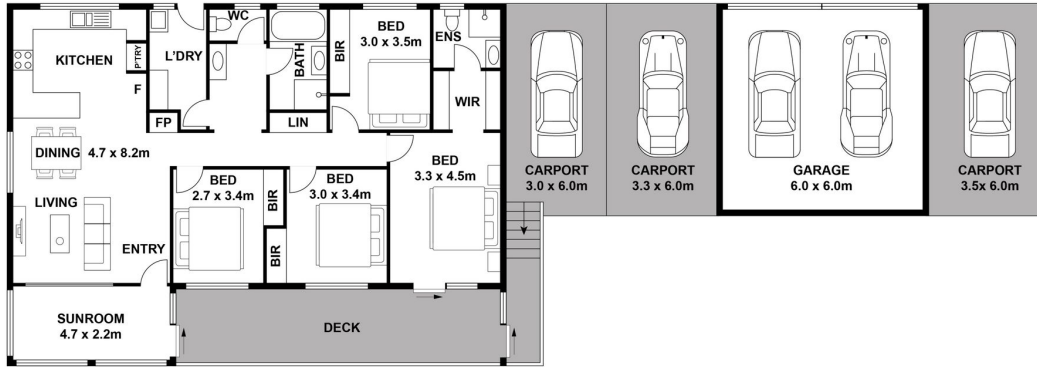
Michelle Cottington

Principal - Michelle Cottington Property

M: 0413 552 519

E: michelle.cottington@smileelite.com

48 DONNELLYS RIDGE ROAD, MORRYA / TOTAL 135m²



Scale in metres. Dimensions are approximate. All information contained herein is gathered from sources we believe to be reliable, however we cannot guarantee its accuracy and interested persons should rely on their own enquiries.

Powered by **SMILEELITE**

Scale in metres. Dimensions are approximate. All information contained herein is gathered from sources we believe to be reliable, however we cannot guarantee its accuracy and interested persons should rely on their own enquiries.