



### 4 Topiary Street, Lakelands FOR SALE



Welcome to your dream home in the Gardens Estate of Lakelands!

\*\*\* HOME OPEN CANCELLED \*\*\*

This stunning family home is a true gem, built in 2021 with attention to detail and high-spec finishes. Nestled in the sought-after neighbourhood of Lakelands, this home offers an exceptional living experience and will suit young families, downsizers and investors alike.

Step inside and be captivated by the tasteful design and neutral colour scheme that creates a warm and inviting ambiance. The tiled floors in the main living areas exude elegance, while the plush carpeting in the bedrooms adds a touch of luxury to your personal spaces.

Boasting an intelligently designed floor plan, this home features a unique fourth bedroom that has been transformed into a versatile theatre room. Imagine cosy movie nights with loved ones or converting the space into your private sanctuary for relaxation or hobbies.

Your safety and security are paramount, which is why this property is equipped with a state-of-the-art Ring security system. With surveillance cameras and a smart doorbell, you can have peace of mind knowing that you can monitor your home from anywhere and keep your loved ones protected.

Step outside to the under main roof alfresco and reticulated lawn beyond which will add a touch of serenity to your daily routine. Whether it's a morning coffee or a barbecue with friends there is plenty of room to entertain whilst the children and fur babies play. A perfect backdrop for making lasting memories.

Comfort is key, and this home delivers with its split system and reverse cycle air-conditioning. You can effortlessly adjust the temperature to suit your preferences, ensuring year-round comfort and a pleasant living environment.

Other features you are sure to love:

- Master bed with large walk-in his/hers robes
- Ensuite with quality fixtures and fittings, double vanity and extra large shower
- Ample cupboard space in the kitchen with stone benchtops
- 900mm Westinghouse electric oven with 5-burner gas hob
- Large fridge recess plumbed for water



**Jan Holloway**

Principal - Lewis Holloway Property

**M:** 0499 955 442

**E:** jan.holloway@smileelite.com



**Denise Lewis**

Principal - Lewis Holloway Property

**M:** 0412 877 613

**E:** denise.lewis@smileelite.com

- Dishwasher
- Security screen to front door
- Double garage
- NBN connected

The Gardens Estate is a family friendly pocket of Lakelands with a brand-new family day-care centre and planned new primary school. This area provides a peaceful retreat away from the hustle and bustle of city life. Yet, it remains conveniently close to essential amenities, including schools, doctors, eateries and cafes, shopping centres, parks and more. Everything you need is within reach, making this location highly desirable for families and being near the freeway exit and the new Lakelands train station, professionals alike.

Don't miss the opportunity to make this stunning property your forever home. Contact us today to schedule a viewing. Your dream lifestyle is just a phone call away!

Disclaimer: The following information is provided solely for general informational purposes and should not be construed as professional advice. The details, descriptions, and specifications of the property advertised are believed to be accurate at the time of listing. However, the seller or their agents do not guarantee the accuracy or completeness of such information and shall not be held liable for any errors or omissions. All potential buyers are advised to conduct their own due diligence and seek independent professional advice before making any decisions.

### Features

2 Open Spaces For Vehicles

### Land size

309.00 Sqm



**Jan Holloway**

Principal - Lewis Holloway Property

**M:** 0499 955 442

**E:** [jan.holloway@smileelite.com](mailto:jan.holloway@smileelite.com)

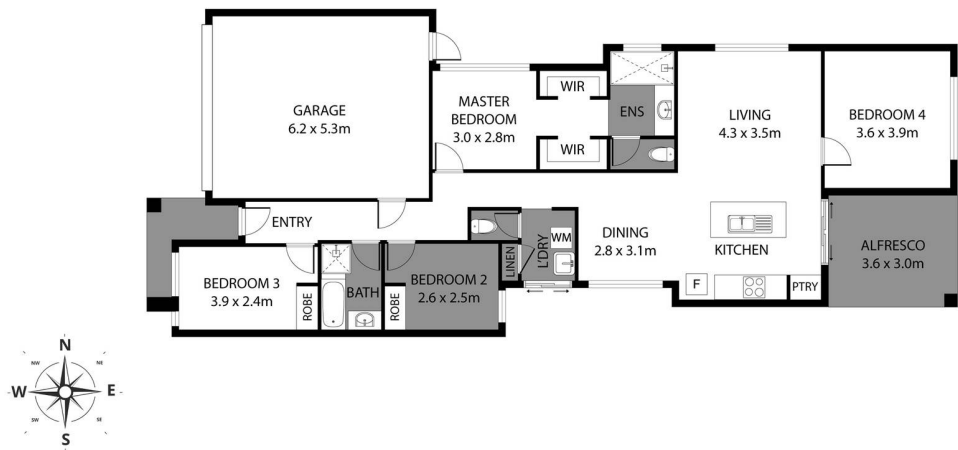


**Denise Lewis**

Principal - Lewis Holloway Property

**M:** 0412 877 613

**E:** [denise.lewis@smileelite.com](mailto:denise.lewis@smileelite.com)



Scale in metres. Dimensions are approximate. All information contained herein is gathered from sources we believe to be reliable, however we cannot guarantee its accuracy and interested persons should rely on their own enquiries.