



22 Duke Street, Uralla
FOR SALE



Cottage charm in the heart of Uralla, open plan with an abundance of natural light

Imagine living in the heart of Uralla, a beaming little town with so much to offer, local cafes, boutique shopping, pubs and even a craft brewery, all within walking distance.

Characterised by a simple cottage façade, this three-bedroom home offers an updated kitchen with electric upright cooker, open plan living featuring cosy wood heating, a large family room at the rear of the property overlooking the back garden and new flooring throughout.

Single lock-up garage and separate outhouse.

Set on a large 912sqm block of land, with the potential for dual-occupancy, extension or large garage (STCA), this home creates a world of opportunity.

Look at the potential this home offers in an excellent location, first home buyers, investors or downsizers. This property will appeal to a wide market ready to make this cottage a home.

For further information or to book an inspection please phone Nathan from Nathan Whitton Property.

Features

1 Living Area

Land size

912.00 Sqm



Nathan Whitton
Principal – Nathan Whitton Property
M: 0435 252 908
E: nathan.whitton@smileelite.com



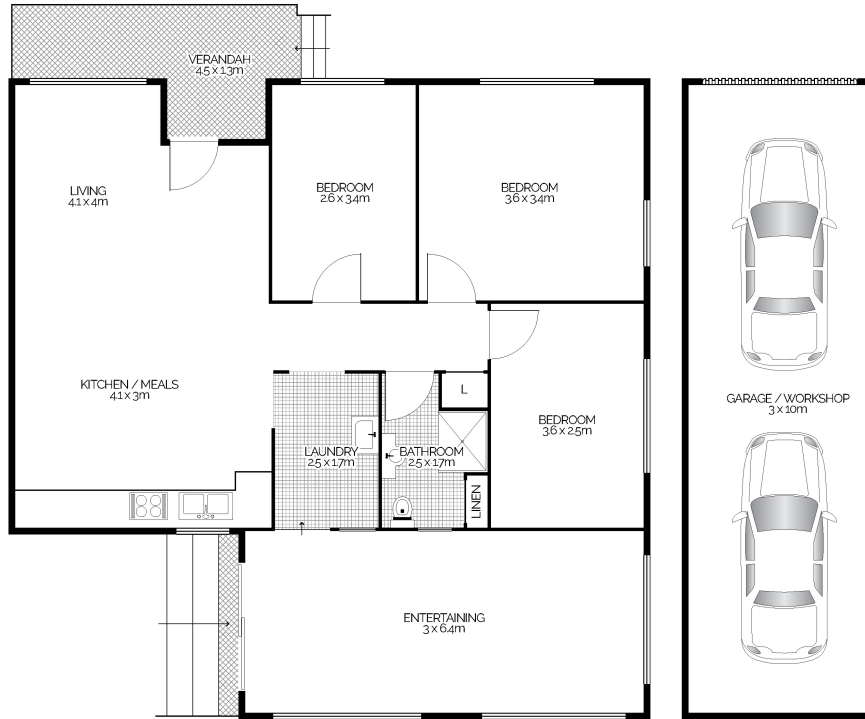
Nathan Whitton

Principal – Nathan Whitton Property

M: 0435 252 908

E: nathan.whitton@smileelite.com

22 Duke Street, URALLA



This floor plan is intended as a guide only. Layout dimensions are approximate only. No representations or warranties of any nature whatsoever are given or intended. Any person using this information should rely on their own enquiries. Floor Plans by JP Media.

Scale in metres. Dimensions are approximate. All information contained herein is gathered from sources we believe to be reliable, however we cannot guarantee its accuracy and interested persons should rely on their own enquiries.