



47 Grafton Rise, Baldivis FOR SALE



Smart, affordable and ready to move in!

This three-bedroom, two-bathroom property was built-in 2011 on a 371sqm block and offers a well-presented living space. It is an ideal option for first-time homebuyers or investors, thanks to its convenient location near Baldivis shopping centre and easy access to the Kwinana Freeway.

Boasting a charming exterior with a well-maintained front yard and a welcoming entrance. The front of the property features a driveway leading to a double garage, providing ample parking space for residents and guests.

Upon entering the property, you are greeted by a tastefully decorated home with neutral colours, creating a warm and cosy ambiance.

The property boasts a modern kitchen with sleek cabinetry, ample storage space, and quality appliances. It is designed to cater to the needs of the residents, providing a functional and practical space for cooking and entertaining. The kitchen seamlessly flows into a dining area, creating an open-plan layout that is perfect for socialising and family meals.

It also offers a separate study/activity area. This room provides a quiet and private area for work or study, making it ideal for professionals who work from home or students who require a dedicated space for their studies.

The open-plan feel of the theater room allows for easy interaction and socialising. you can move freely between the theater room and the adjoining space, enjoying the movie or show while still being connected to the rest of the entertainment area.

The property offers three generous-sized bedrooms, each with its own unique features. The master bedroom is well-appointed and features an ensuite bathroom for added privacy and convenience. The remaining two bedrooms are also spacious and provide ample room for furniture and storage.

In addition to the ensuite bathroom, the property includes a second well-equipped bathroom that serves the other two bedrooms and guests. Both bathrooms are modern, featuring contemporary fixtures and finishes.



Denise Lewis

Principal - Lewis Holloway Property

M: 0412 877 613

E: denise.lewis@smileelite.com



Jan Holloway

Principal - Lewis Holloway Property

M: 0499 955 442

E: jan.holloway@smileelite.com

The property offers a low-maintenance backyard that is ideal for those who prefer spending time outdoors without the hassle of extensive upkeep. It provides enough space for outdoor furniture, a barbecue, or a small garden, allowing residents to enjoy the fresh air and sunshine.

47 Grafton Rise, Baldivis is conveniently situated close to the Baldivis shopping centre, offering easy access to a wide range of retail stores, restaurants, and entertainment options. Additionally, its proximity to the Kwinana Freeway ensures effortless commuting to other areas, making it an excellent choice for those who need to travel for work or leisure.

Disclaimer: All information contained herein is obtained from property owners or third-party sources which we believe are reliable. We have no reason to doubt its accuracy, however we cannot guarantee it. All interested person/s should rely on their own enquiries.

Features

2 Toilets
Built-In Robes
1 Ensuite
1 Living Area
Study
2 Open Spaces For Vehicles
Air Conditioning

Land size

371.00 Sqm



Denise Lewis

Principal - Lewis Holloway Property

M: 0412 877 613

E: denise.lewis@smileelite.com



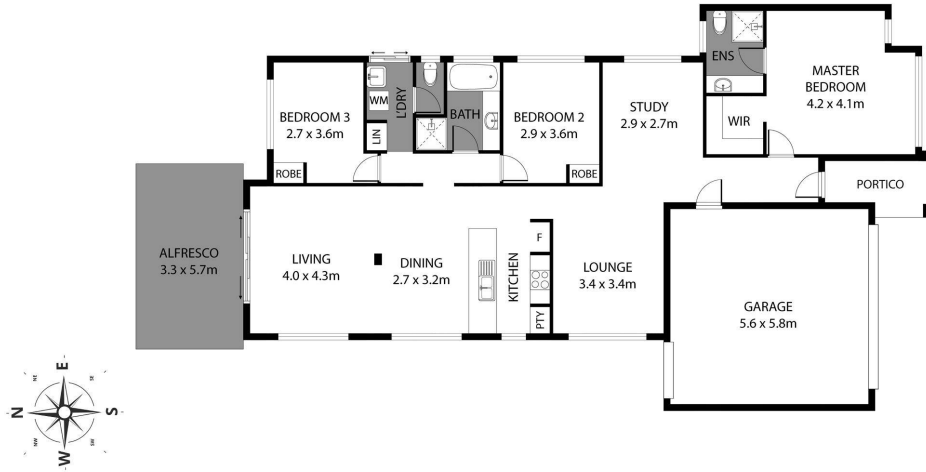
Jan Holloway

Principal - Lewis Holloway Property

M: 0499 955 442

E: jan.holloway@smileelite.com

47 Grafton Rise, Baldivis/206.3m²



Scale in metres. Dimensions are approximate. All information contained herein is gathered from sources we believe to be reliable, however we cannot guarantee its accuracy and interested persons should rely on their own enquiries.

Scale in metres. Dimensions are approximate. All information contained herein is gathered from sources we believe to be reliable, however we cannot guarantee its accuracy and interested persons should rely on their own enquiries.