



17 George Hibbert Road, Madora Bay FOR SALE



Seaside opulent retreat Madora Bay

Introducing an exquisite property ideally located approx 100-meters from the pristine shores of Madora Bay Beach. This stunning residence boasts four-bedrooms, two-bathrooms, and a double garage, all within a beautifully designed and meticulously styled interior.

As you step inside, you are greeted by a sense of elegance and sophistication. The attention to detail in the design and decor is evident, creating a seamless blend of functionality and aesthetics throughout the entire home. Every corner showcases tasteful touches and thoughtful finishes, ensuring a harmonious and inviting atmosphere.

The spacious layout effortlessly accommodates the needs of a modern family. The four bedrooms offer ample space for relaxation and privacy, with large windows allowing natural light to fill the rooms. The master bedroom serves as a serene retreat, featuring an en-suite bathroom and providing a peaceful sanctuary to unwind.

The two bathrooms in the property are elegantly appointed, combining style and functionality. With modern fixtures, sleek finishes and a well-thought-out design, these spaces offer a luxurious bathing experience for the entire family.

The heart of the home lies in the open-plan living area, where the kitchen seamlessly flows into the dining and living spaces. This central hub is perfect for entertaining and creating lasting memories with loved ones. The kitchen itself is a masterpiece, boasting high-end appliances, ample storage, and a well-designed layout that caters to the culinary enthusiast.

The interior design is a true testament to the property's beauty. Each room has been carefully curated, featuring a harmonious blend of textures, colors, and furnishings. The result is a cohesive and visually stunning aesthetic that exudes both comfort and style.

Beyond the interiors, the property's location is truly unparalleled. Being only 100-meters away from Madora Bay Beach, residents have the luxury of enjoying coastal living at its finest. Imagine strolling along the sandy shores, taking in the breathtaking sunsets, or simply relaxing under the warm sun with the sound of waves crashing nearby.

To complete the package, the property offers a double garage, providing ample space for secure parking and additional storage.



Denise Lewis

Principal - Lewis Holloway Property

M: 0412 877 613

E: denise.lewis@smileelite.com



Jan Holloway

Principal - Lewis Holloway Property

M: 0499 955 442

E: jan.holloway@smileelite.com

More reasons you will love this home:

- Stunning four-bedroom, two-bathroom and two-garage property offers multiple living spaces including
- Front living area/TV room
- Open-plan living and dining
- Large study
- A huge parents' retreat with a large walk-in robe and luxurious ensuite and double vanities
- Beautiful chef's kitchen with stone tops and dishwasher
- Both bathrooms are stunning and well appointed and fitted to the highest standard: floor-to-ceiling tiling
- Reverse cycle split system air-conditioning
- High ceilings
- A protective alfresco is a great retreat from the breezes and the summer heat
- Double garage with rear roller shutter door which gives access to a hardstanding

Madora Bay is regarded by many as the most liveable land estate in Mandurah primarily because of its beachside location and ease of access to Perth.

Located just 10-minutes north of Mandurah, the suburb is fringed by the pristine shoreline of Madora Bay Beach. There is a surf life saving club, world-class golf course, shopping centre, and quality schools located nearby.

Disclaimer: All information contained herein is obtained from property owners or third-party sources which we believe are reliable. We have no reason to doubt its accuracy, however we cannot guarantee it. All interested person/s should rely on their own enquiries.

Features

2 Toilets
Built-In Robes
1 Ensuite
2 Living Areas
Study
2 Open Spaces For Vehicles
Air Conditioning

Land size

608.00 Sqm



Denise Lewis

Principal - Lewis Holloway Property

M: 0412 877 613

E: denise.lewis@smileelite.com



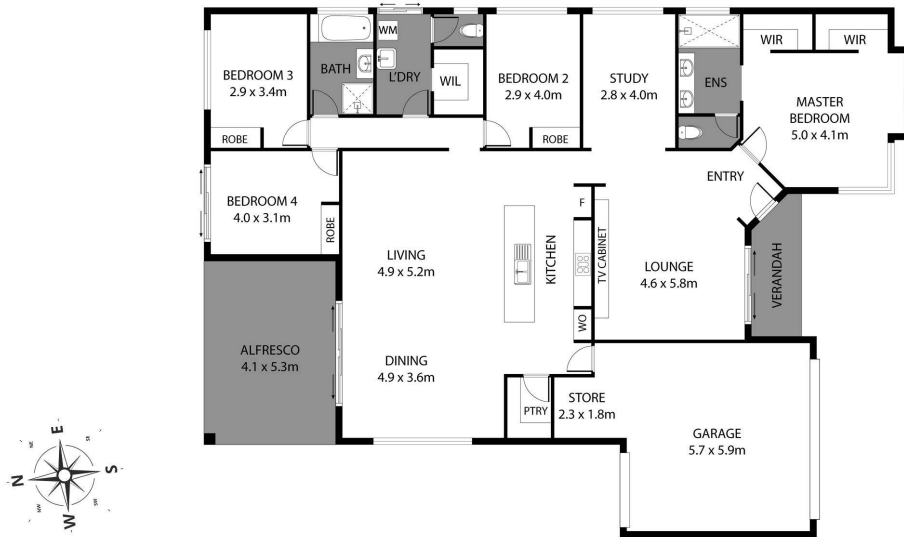
Jan Holloway

Principal - Lewis Holloway Property

M: 0499 955 442

E: jan.holloway@smileelite.com

17 George Hibbert Road, Madora Bay/284.6m²



Scale in metres. Dimensions are approximate. All information contained herein is gathered from sources we believe to be reliable, however we cannot guarantee its accuracy and interested persons should rely on their own enquiries.

Scale in metres. Dimensions are approximate. All information contained herein is gathered from sources we believe to be reliable, however we cannot guarantee its accuracy and interested persons should rely on their own enquiries.