



46 Salisbury Street, Uralla FOR SALE



Elevated Two-Storey Residence

Elevated on a prime corner block just a short level walk to the town centre, this two-storey residence is one not to be missed.

Imagine living in the heart of a thriving country town with cafes, boutique shopping and community events right on your doorstep.

The home features four bedrooms, plus a study and two bathrooms across two levels. Upstairs has polished timber floors, a second sitting room and a balcony overlooking the neighbourhood and mountains beyond.

Downstairs the kitchen is equipped with gas and electric cooking, tiled floors, a large bedroom and study plus a second bathroom.

Walking out onto your very own private covered patio, this home has many spaces you can enjoy. A tiered back garden leads to a large shed with enough space for two cars in addition to the carport at the front of the property.

The property is fully fenced and ready for your family to put their mark on this fabulously located home.

For further enquiries or to book an inspection please phone Nathan from Nathan Whitton Property.

Features

Land size

683.00 Sqm



Nathan Whitton
Principal – Nathan Whitton Property
M: 0435 252 908
E: nathan.whitton@smileelite.com



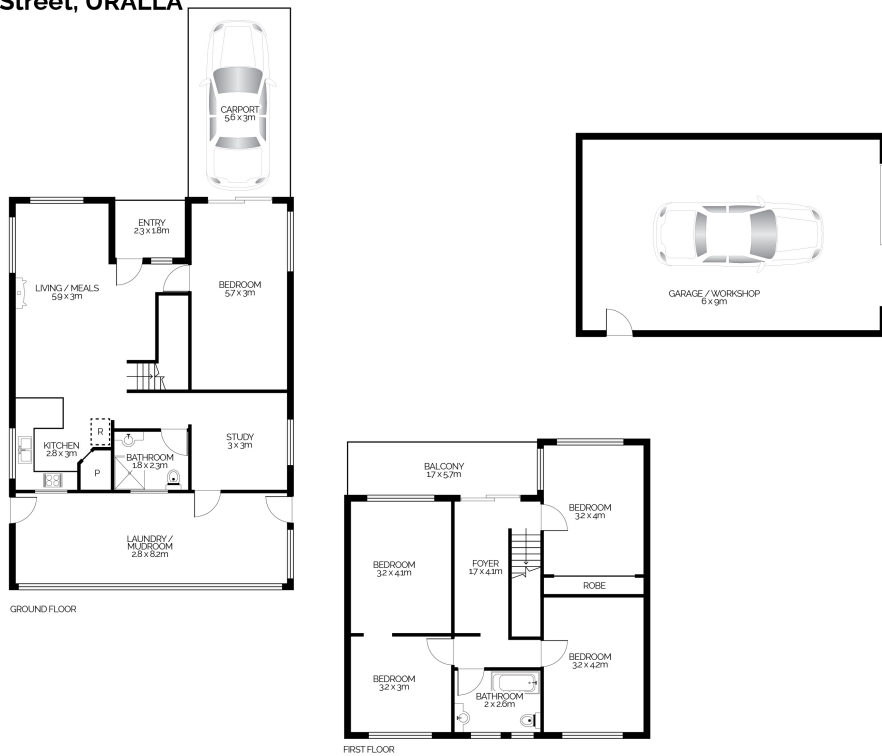
Nathan Whitton

Principal – Nathan Whitton Property

M: 0435 252 908

E: nathan.whitton@smileelite.com

46 Salisbury Street, URALLA



This floor plan is intended as a guide only. Layout dimensions are approximate only. No representations or warranties of any nature whatsoever are given or intended. Any person using this information should rely on their own enquiries. Floor Plans by JP Media.

Scale in metres. Dimensions are approximate. All information contained herein is gathered from sources we believe to be reliable, however we cannot guarantee its accuracy and interested persons should rely on their own enquiries.