



3A Dumaresq Street, Uralla FOR SALE



Family home in desirable location

Welcome to this modern and well-appointed home, ideally situated just moments away from the bustling town centre. This property offers a convenient and comfortable lifestyle in a compact 422sqm package.

Inside, you'll discover three spacious bedrooms, including a master bedroom with its own ensuite and a walk-in robe. A modern family bathroom serves the other bedrooms, providing both style and functionality. The single garage offers the convenience of internal access, making daily living a breeze.

The heart of this home is the open-plan kitchen and living area, which is flooded with natural light from the morning sunshine. Sliding glass doors open up to the back garden, where you'll find unexpected privacy in such a central location. This garden is a blank canvas, inviting you to add your personal touch and create your own oasis in the beautiful New England climate.

The interior of this home is move-in ready, allowing you to immediately immerse yourself in the charm of Uralla. Enjoy boutique shopping, explore the many cafes and eateries, or visit the nearby brewery for a taste of local flavours. Everything you need to savour the vibrant lifestyle of Uralla is at your doorstep.

Don't miss the opportunity to make this modern home your own and experience the convenience and comfort it offers. Whether you're looking for a permanent residence or a weekend getaway, this property is ready and waiting for you to call it home. Come and discover the best of Uralla living today!

Disclaimer: All information contained herein is obtained from property owners or third-party sources which we believe are reliable. We have no reason to doubt its accuracy, however we cannot guarantee it. All interested person/s should rely on their own enquiries.

Features

Land size

422.00 Sqm



Nathan Whitton

Principal – Nathan Whitton Property

M: 0435 252 908

E: nathan.whitton@smileelite.com



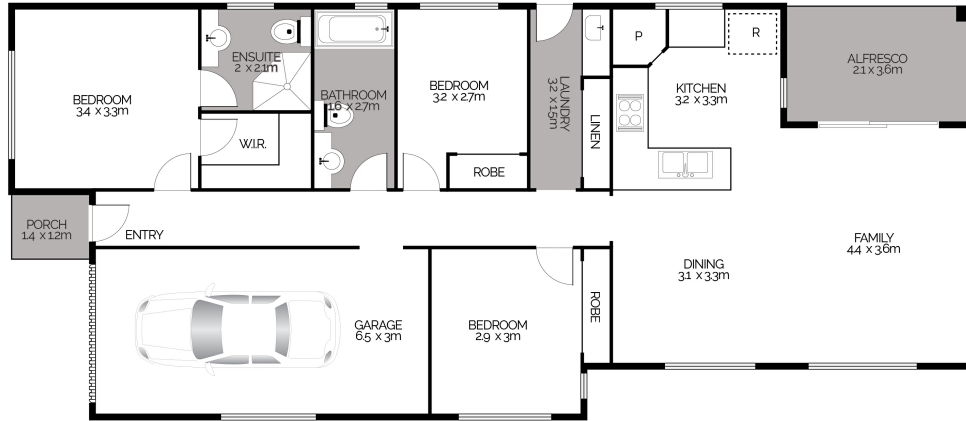
Nathan Whitton

Principal – Nathan Whitton Property

M: 0435 252 908

E: nathan.whitton@smileelite.com

3a Dumaresq Street, URALLA



This floor plan is intended as a guide only. Layout dimensions are approximate only. No representations or warranties of any nature whatsoever are given or intended. Any person using this information should rely on their own enquiries. Floor Plans by JP Media.



Scale in metres. Dimensions are approximate. All information contained herein is gathered from sources we believe to be reliable, however we cannot guarantee its accuracy and interested persons should rely on their own enquiries.