



2/2 Kianga Close, Flinders FOR SALE



Attention First Home Buyers and Investors

Welcome to this charming three-bedroom, two-bathroom home nestled on a corner block, offering a harmonious blend of comfort, convenience and security. Only an inspection will reveal how generous in size this property is. Situated in a family-friendly neighbourhood, this home is designed to cater to your every need.

As you step inside, you'll immediately appreciate the thoughtful layout that maximizes both space and functionality. The heart of the home is a spacious living room that welcomes you with abundant natural light, creating a warm and inviting ambiance. This living area serves as a versatile space where relaxation and entertainment seamlessly coexist.

The well-appointed kitchen effortlessly connects to the dining area, forming the perfect hub for family meals and social gatherings. Step through the sliding glass doors, and you'll discover the undercover outdoor entertaining area that extends your living space outdoors, ideal for enjoying a barbecue, morning coffees or evening chats under the stars.

The main bedroom boasts an ensuite and walk-in robe, providing a private oasis where you can unwind and rejuvenate. Two additional bedrooms have built in robes and ensure ample accommodation for family members, guests, or a home office, adapting to your unique lifestyle needs.

Safety and privacy are paramount here. The property is fully fenced, creating a secure haven for children to play freely and pets to roam with peace of mind. The single car garage offers both shelter for your vehicle or additional storage space with internal access to the home, further enhancing the functionality of the property.

Beyond the doors, you'll find yourself within close proximity to local amenities, the corner shop, parks, schools, and shopping centres, making daily errands a breeze. You'll find it an easy walk to Shellharbour Village, the Marina or even Stockland Shellharbour. Whether you're seeking an investment property or a place to create lasting memories with loved ones, this duplex caters to all your desires.

Don't miss the opportunity to make this fabulous property your own, call Monique Field today to arrange your inspection.



Monique Field

Principal - Monique Field Property

M: 0403 021 172

E: monique.field@smileelite.com



Phoenix Smith

Associate - Monique Field Property

M: 0421 850 852

E: phoenix.smith@smileelite.com

Disclaimer: All information contained herein is obtained from property owners or third-party sources which we believe are reliable. We have no reason to doubt its accuracy, however we cannot guarantee it. All interested person/s should rely on their own enquiries.

Features

2 Toilets
1 Ensuite
1 Living Area
NBN Available
Deck
Fully Fenced
Split System A/C

Land size

334.00 Sqm



Monique Field

Principal - Monique Field Property

M: 0403 021 172

E: monique.field@smileelite.com



Phoenix Smith

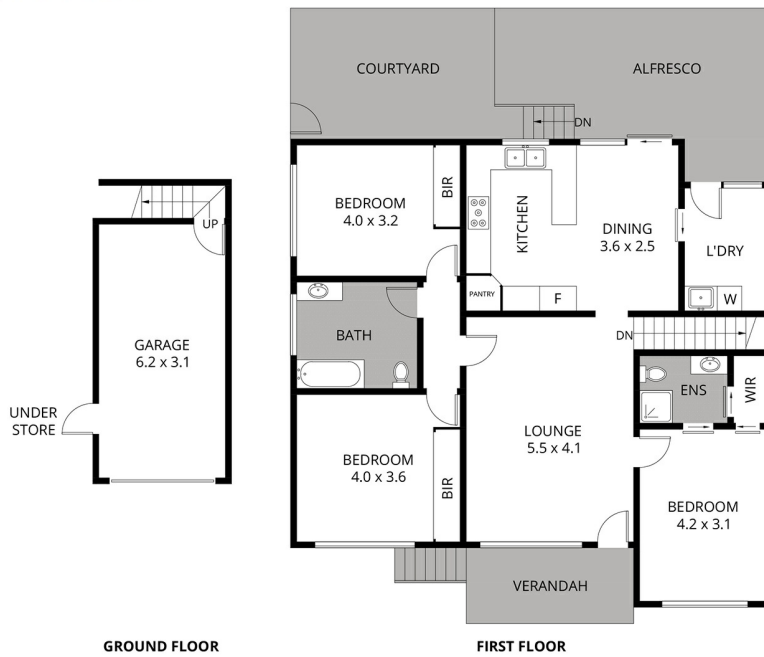
Associate - Monique Field Property

M: 0421 850 852

E: phoenix.smith@smileelite.com

MONIQUE FIELD
PROPERTY

2/2 KIANGA CLOSE, FLINDERS
Total 135.2 m² (Including Garage)



Scale in metres. Dimensions are approximate. All information contained herein is gathered from sources we believe to be reliable, however we cannot guarantee its accuracy and interested persons should rely on their own enquiries.

POWERED BY SMILE ELITE™
PROUD PARTNERS WITH SYDNEY COUNTRY LIVING

Scale in metres. Dimensions are approximate. All information contained herein is gathered from sources we believe to be reliable, however we cannot guarantee its accuracy and interested persons should rely on their own enquiries.