



**2/5 Chilcott Drive, Goonellabah**  
**FOR SALE**

**Duplex with views**

Situated in Chilcott's Drive, Goonellabah, this two-bedroom duplex offers a lifestyle of comfort and convenience. With stunning views overlooking East Lismore, the home is conveniently located being central to both the Goonellabah and Lismore Shopping Precincts.

- Open plan living with large windows
- Well appointed kitchen and walk-in pantry
- Single lock-up garage
- Fully fenced yard
- Solar panels
- Modern amenities
- Prime location

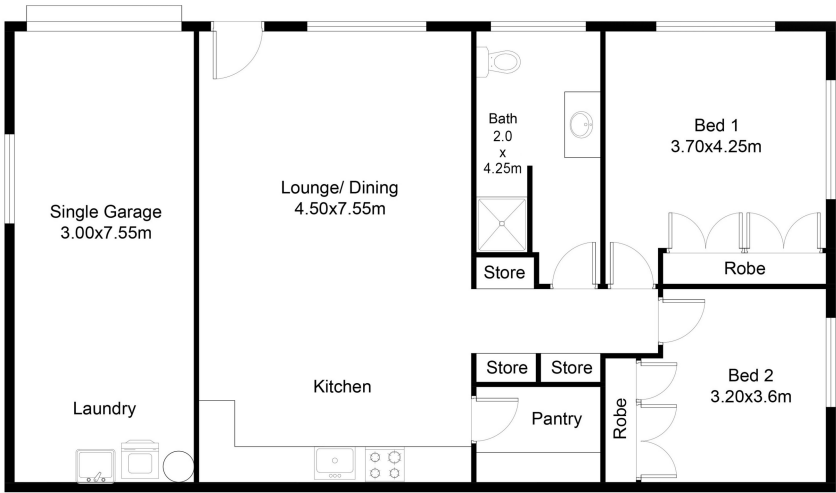
**Features**



**Lyn Youngberry**  
Principal - Lyn Youngberry Property  
**M:** 0411 507 209  
**E:** [lyn.youngberry@smileelite.com](mailto:lyn.youngberry@smileelite.com)



Lyn Youngberry  
Principal - Lyn Youngberry Property  
M: 0411 507 209  
E: [lyn.youngberry@smileelite.com](mailto:lyn.youngberry@smileelite.com)



Scale in metres. Dimensions are approximate. All information contained herein is gathered from sources we believe to be reliable, however we cannot guarantee its accuracy and interested persons should rely on their own enquiries.